

## TYPHA

### WARNING:

THE SAFETY OF THIS FIXTURE IS GUARANTEED ONLY IF YOU COMPLY WITH THESE INSTRUCTIONS; REMEMBER TO CONSERVE IN A SAFE PLACE.

### ATTENTION:

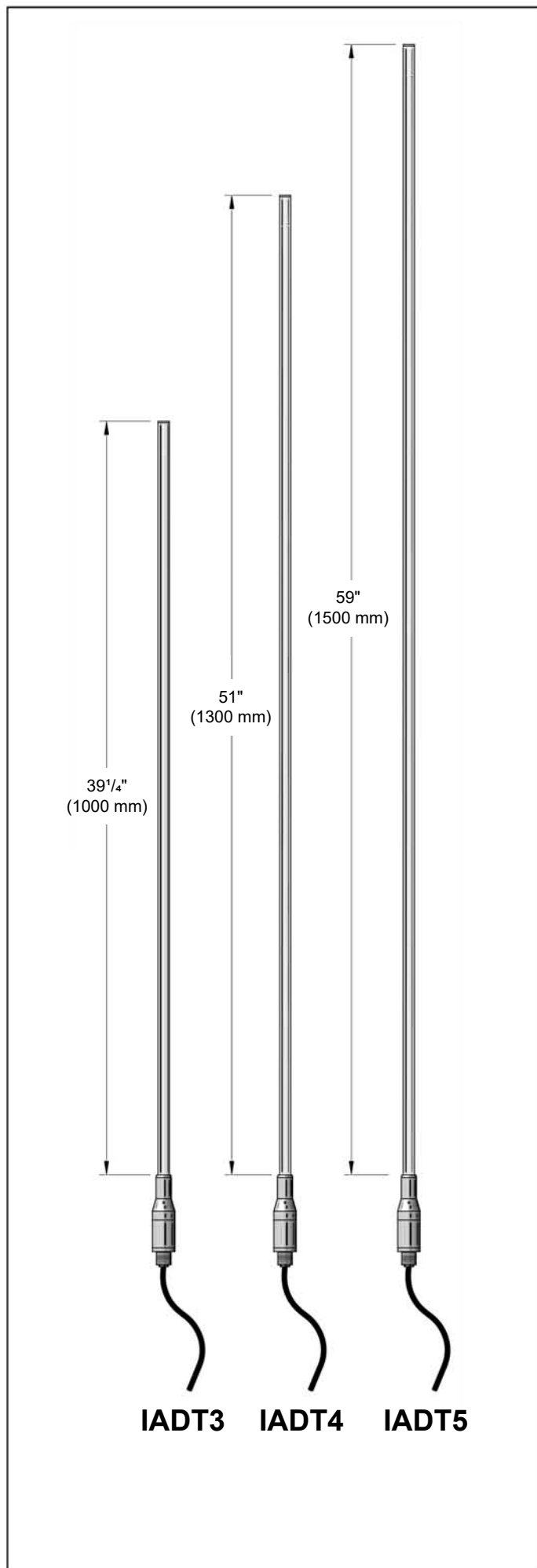
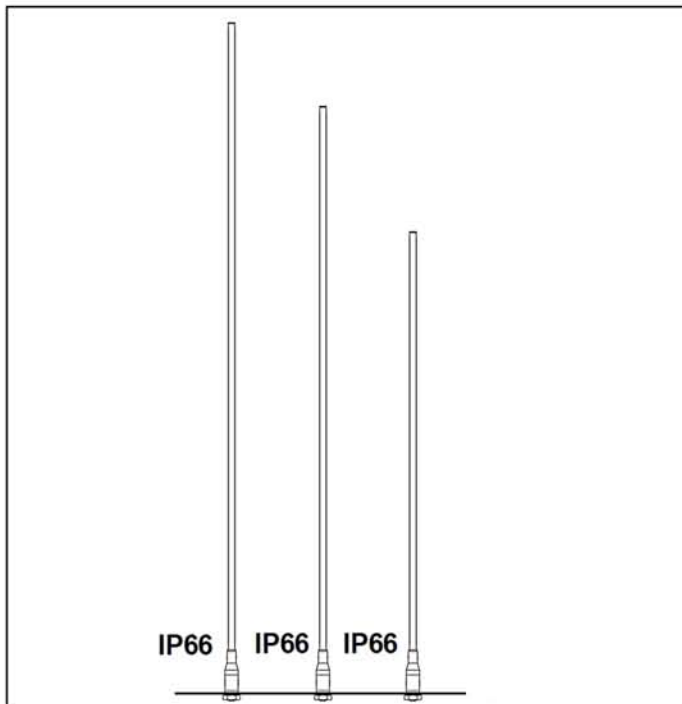
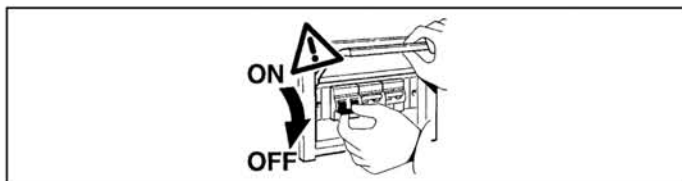
LA SECURITE DE L'APPAREIL N'EST GARANTIE QU'EN CAS D'UTILISATION CORRECTE DES INSTRUCTIONS SUIVANTES; IL FAUT PAR CONSEQUENT LES CONSERVER.

### ATENCION:

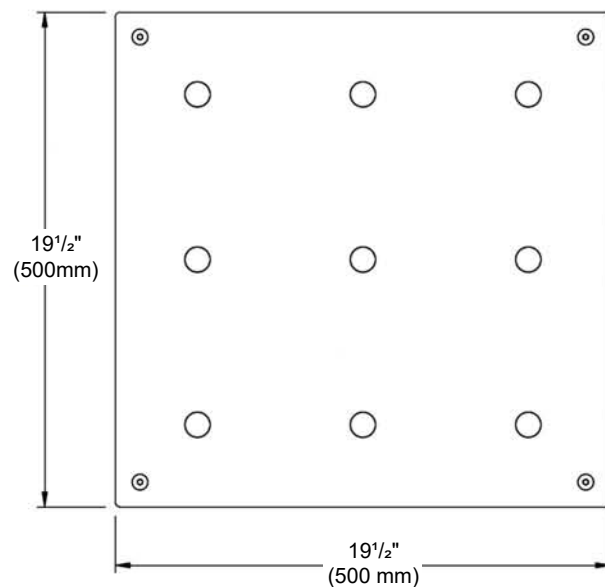
LA SEGURIDAD DEL APARATO SE GARANTIZA SOLO CUMPLIENDO CUIDADOSAMENTE LAS SIGUIENTES INSTRUCCIONES; POR ELLO, ES NECESARIO CONSERVARLAS

### ATTENZIONE:

LA SICUREZZA DELL'APPARECCHIO E' GARANTITA SOLO CON L'USO APPROPRIA TO DELLE SEGUENTI ISTRUZIONI; PERTANTO E'NECESSARIO CONSERVARLE.



## DRAINAGE

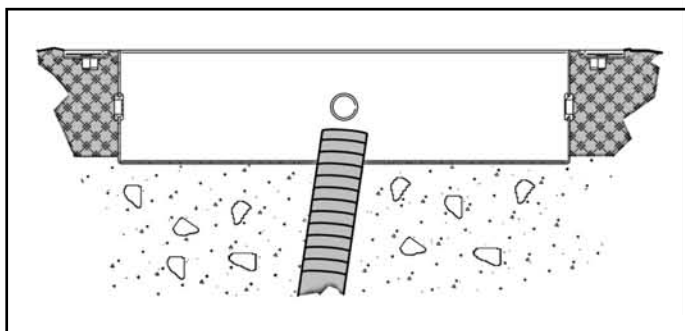


**EN** Prepare an adequate hole, leaving 12" (300 mm) of pit gravel on the bottom for drainage

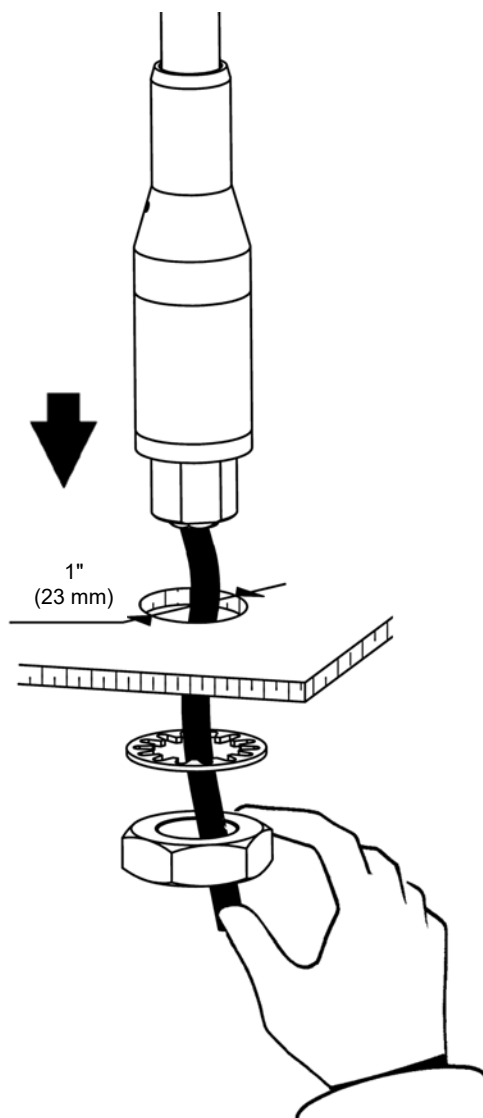
**FR** Préparer un creux approprié en laissant 12" (300 mm) de gravier au fond du trou pour le drainage

**ES** Predisponer un hueco adecuado, dejando al fondo 12" (300 mm) con cascós para drenaje.

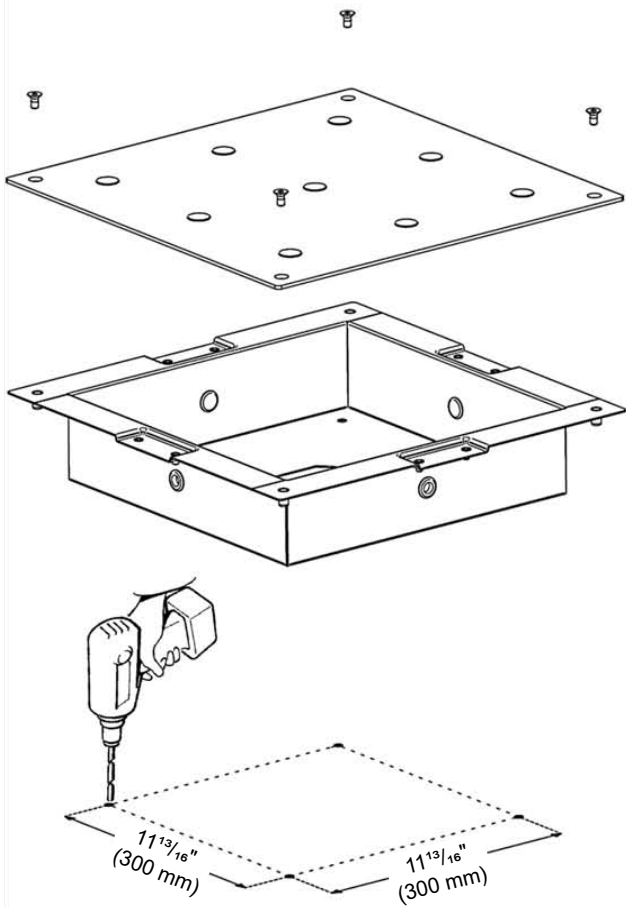
**IT** Prepare un adeguato scavo lasciando sul fondo 12" (300 mm) di ghiaia di drenaggio.



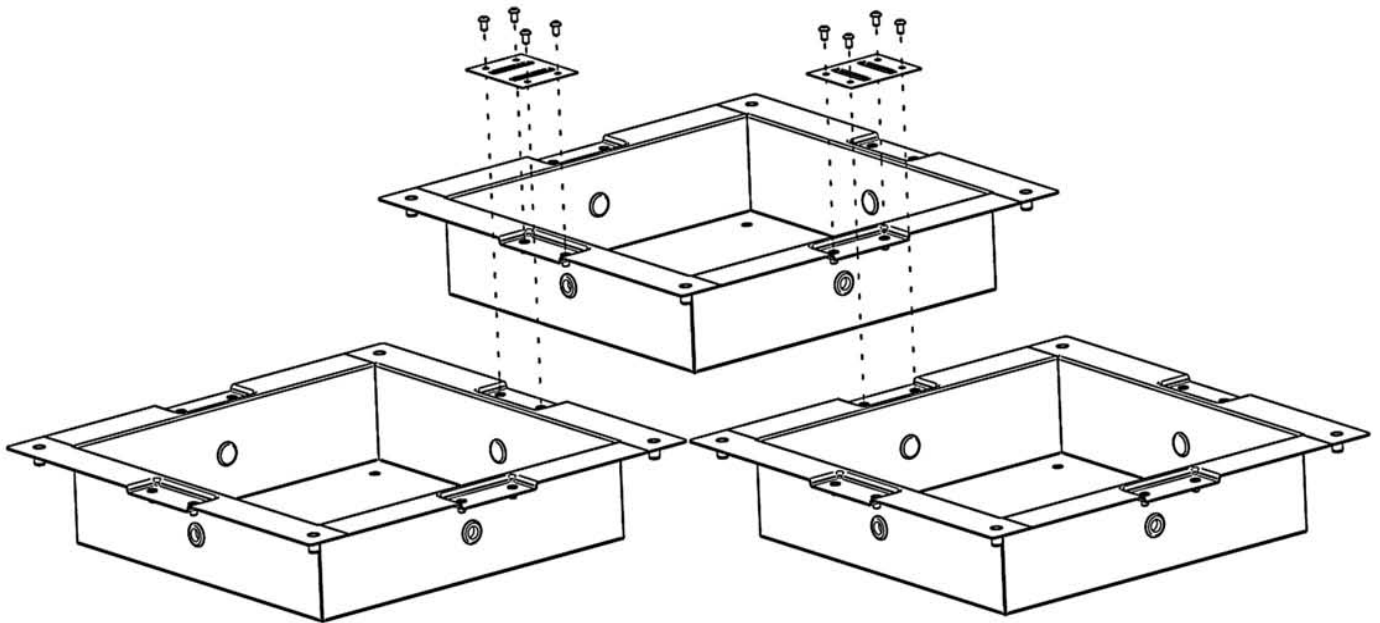
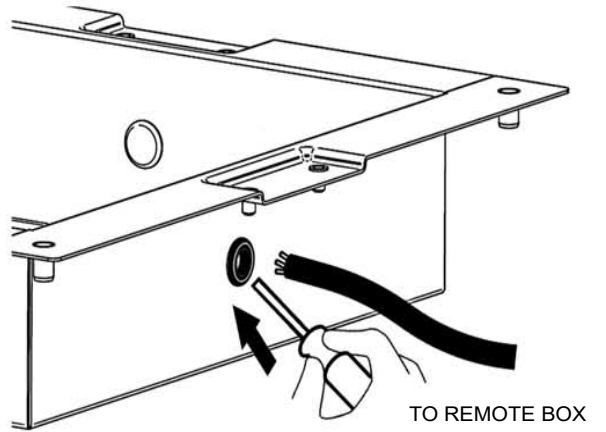
A

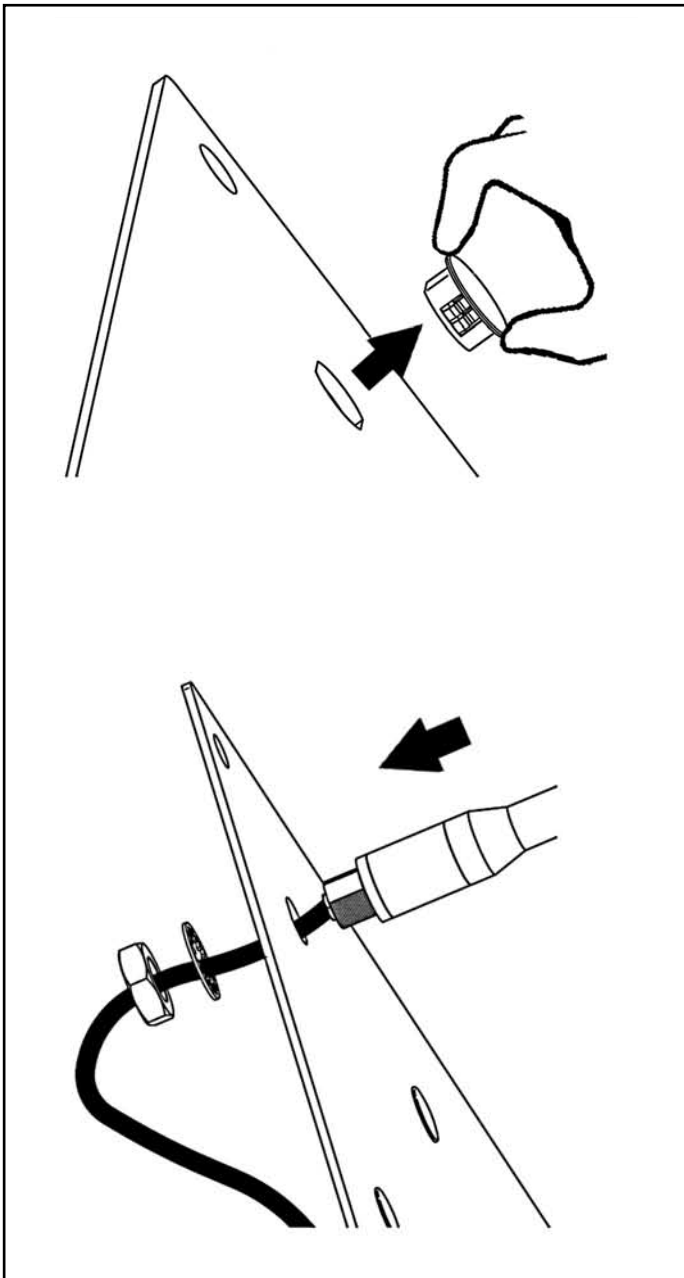


INSTALLATION ON CONCRETE OR PAVEMENT SURFACE



REQUIREMENT 1.7W PER FIXTURE, 500mA





- EN** For information on LED replacement please contact IGuzzini  
**FR** Pour procéder au remplacement de la LED, adressez-vous à la société iGuzzini  
**ES** Para sustituir el LED llame a la empresa IGuzzini.  
**IT** Per la sostituzione del LED contattare l'azienda iGuzzini.



- EN** Should the glass break, the product cannot be used and you should contact the manufacturer for its replacement.  
**FR** En cas d'endommagement de l'écran de protection le produit ne peut pas être utilisé, contactez le fabricant pour le remplacement.  
**ES** No utilizar el producto en caso del vidrio y contactar el fabricante para la sustitución.  
**IT** In caso di rottura del vetro il prodotto non puo essera utilizzato, contattare il costruttore per la sua sostituzione.

iGuzzini North America

9320 Boul.St-Laurent  
 suite 100, Montréal (Québec)  
 Canada H2N 1N7  
 P.: 514.523.1337  
 F.: 514.525.6107  
 www.iguzzini.com/us  
 DM - 31.05.2022