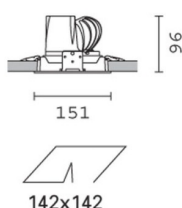
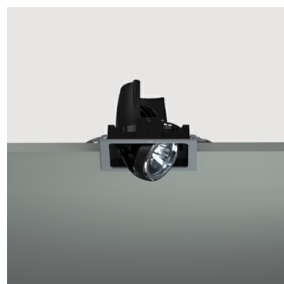


Last information update: April 2024

Product configuration: MP22

MP22: square recessed luminaire - warm white passive dissipation LED - integrated DALI control gear - wide flood

**Product code**MP22: square recessed luminaire - warm white passive dissipation LED - integrated DALI control gear - wide flood **Attention! Code no longer in production****Technical description**

Recessed adjustable removable luminaire for LED lamp with passive heat dissipation system. Square sheet steel perimeter frame. Main structure made of die-cast aluminium. Steel rotation hinges. Die-cast aluminium lamp body with shaped surface for high level radiant effect for effectively reducing the temperature and keeping the long-term LED lamp performance unchanged. Chrome-plated aluminium lamp body closing ring. Reflector with high efficiency super-pure aluminium optic - wide flood beam angle. Orientamento del corpo con dispositivo di manovra manuale: interno 29° - esterno 75° - rotazione sull'asse 355°. Supplied with DALI dimmable control gear connected to the luminaire. Warm white high colour rendering LEDs CRI (Ra) > 90.

Installation

recessed using steel springs for false ceilings with thicknesses starting at 1 mm; preparation slot 142 x 142 mm

Colour

White / Aluminium (39) | Grey / Black / Aluminium (E1)

Weight (Kg)

0.93

Mounting

ceiling recessed

Wiring

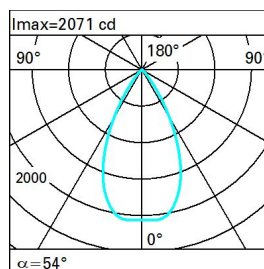
on control gear box with quick-coupling connections

Complies with EN60598-1 and pertinent regulations

**Technical data**

Im system:	1559	CRI:	90
W system:	18.3	Colour temperature [K]:	3000
Im source:	2000	MacAdam Step:	2
W source:	16	Life Time LED 1:	> 50,000h - L80 - B10 (Ta 25°C)
Luminous efficiency (Im/W, real value):	85.2	Lamp code:	LED
Im in emergency mode:	-	Number of lamps for optical assembly:	1
Total light flux at or above an angle of 90° [Lm]:	0	ZVEI Code:	LED
Light Output Ratio (L.O.R.) [%]:	78	Number of optical assemblies:	1
Beam angle [°]:	54°	Control:	DALI

Polar

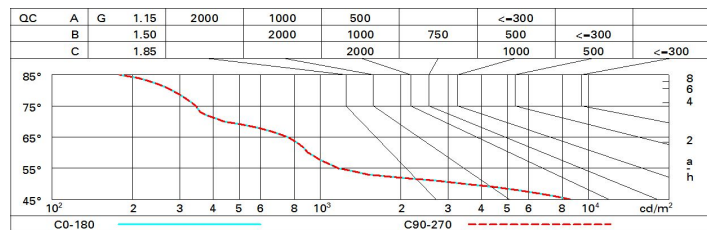
	Lux			
	h	d	Em	Emax
	2	2	400	516
	4	4.1	100	129
	6	6.1	44	57
$\alpha = 54^\circ$	8	8.2	25	32

CIE
nL 0.78
97-100-100-100-78
UGR 15.0-15.0
DIN
A.61
UTE
0.78A+0.00T
F*1=965
F*1+F*2=997
F*1+F*2+F*3=1000
CIBSE
LG3 L<1500 cd/m² at 65°
UGR<16 | L<1500 cd/mq @65°

Utilisation factors

R	77	75	73	71	55	53	33	00	DRR
K0.8	69	65	63	60	65	62	62	59	76
1.0	72	69	66	65	68	66	66	63	81
1.5	76	74	72	70	73	71	70	68	87
2.0	79	77	75	74	76	75	74	71	92
2.5	80	79	78	77	78	77	76	74	95
3.0	81	80	80	79	79	78	77	75	97
4.0	83	82	81	81	80	80	79	77	98
5.0	83	82	82	82	81	81	79	78	99

Luminance curve limit



UGR diagram

Corrected UGR values (at 2000 lm bare lamp luminous flux)											
Reflect.: ceiling/cav walls work pl. Room dim x y		viewed crosswise					viewed endwise				
		0.70	0.70	0.50	0.50	0.30	0.70	0.70	0.50	0.50	0.30
		0.50	0.30	0.50	0.30	0.30	0.50	0.30	0.50	0.30	0.30
		0.20	0.20	0.20	0.20	0.20	0.20	0.20	0.20	0.20	0.20
2H	2H	15.6	16.2	15.8	16.4	16.7	15.6	16.2	15.8	16.4	16.7
	3H	15.4	16.0	15.7	16.3	16.5	15.4	16.0	15.7	16.3	16.5
	4H	15.4	15.9	15.7	16.2	16.5	15.4	15.9	15.7	16.2	16.5
	6H	15.3	15.8	15.6	16.1	16.4	15.3	15.8	15.6	16.1	16.4
	8H	15.2	15.7	15.6	16.0	16.4	15.2	15.7	15.6	16.0	16.4
	12H	15.2	15.6	15.6	16.0	16.3	15.2	15.6	15.6	16.0	16.3
4H	2H	15.4	15.9	15.7	16.2	16.5	15.4	15.9	15.7	16.2	16.5
	3H	15.2	15.7	15.6	16.0	16.3	15.2	15.7	15.6	16.0	16.3
	4H	15.1	15.5	15.5	15.9	16.3	15.1	15.5	15.5	15.9	16.3
	6H	15.0	15.4	15.5	15.8	16.2	15.0	15.4	15.5	15.8	16.2
	8H	15.0	15.3	15.4	15.7	16.2	15.0	15.3	15.4	15.7	16.2
	12H	14.9	15.2	15.4	15.7	16.1	14.9	15.2	15.4	15.7	16.1
8H	4H	15.0	15.3	15.4	15.7	16.2	15.0	15.3	15.4	15.7	16.2
	6H	14.9	15.2	15.4	15.6	16.1	14.9	15.2	15.4	15.6	16.1
	8H	14.9	15.1	15.3	15.5	16.0	14.9	15.1	15.3	15.5	16.0
	12H	14.8	15.0	15.3	15.5	16.0	14.8	15.0	15.3	15.5	16.0
12H	4H	14.9	15.2	15.4	15.7	16.1	14.9	15.2	15.4	15.7	16.1
	6H	14.8	15.1	15.3	15.5	16.0	14.9	15.1	15.3	15.5	16.0
	8H	14.8	15.0	15.3	15.5	16.0	14.8	15.0	15.3	15.5	16.0
Variations with the observer position at spacing:											
S =	1.0H	5.1 / -13.5					5.1 / -13.5				
	1.5H	7.9 / -14.7					7.9 / -14.7				
	2.0H	9.9 / -15.9					9.9 / -15.9				