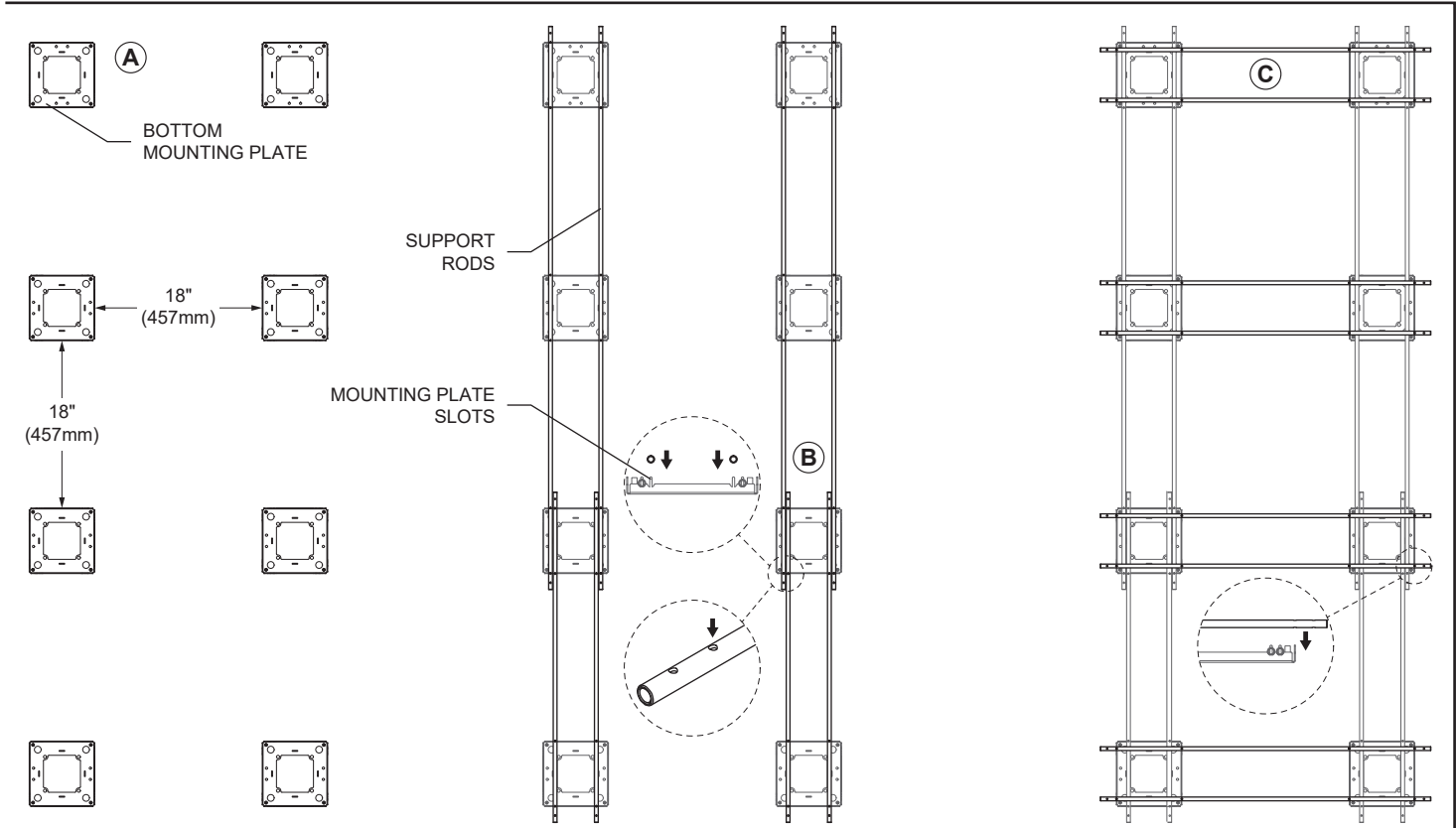


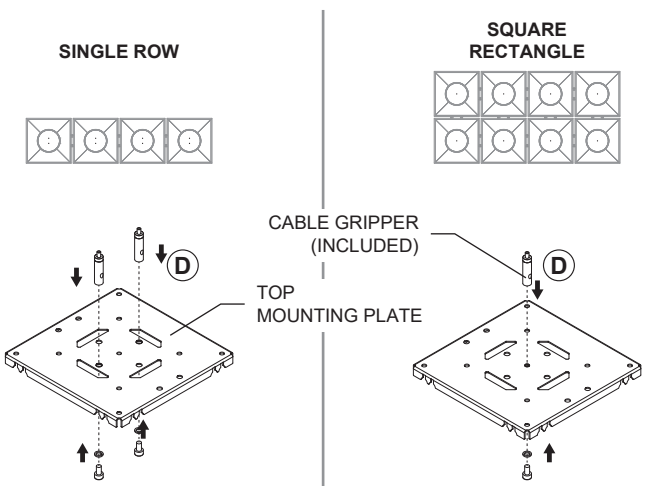
**IMPORTANT** - READ CAREFULLY BEFORE INSTALLING FIXTURE. RETAIN THESE INSTRUCTIONS FOR FUTURE REFERENCE. THIS PRODUCT MUST BE INSTALLED IN ACCORDANCE WITH THE NATIONAL ELECTRICAL CODE AND ALL APPLICABLE LOCAL CODES, BY A PERSON FAMILIAR WITH THE CONSTRUCTION AND OPERATION OF THE PRODUCT, AND THE HAZARDS INVOLVED. PROPER GROUNDING IS REQUIRED FOR SAFETY.

**SUPPORT STRUCTURE ASSEMBLY**

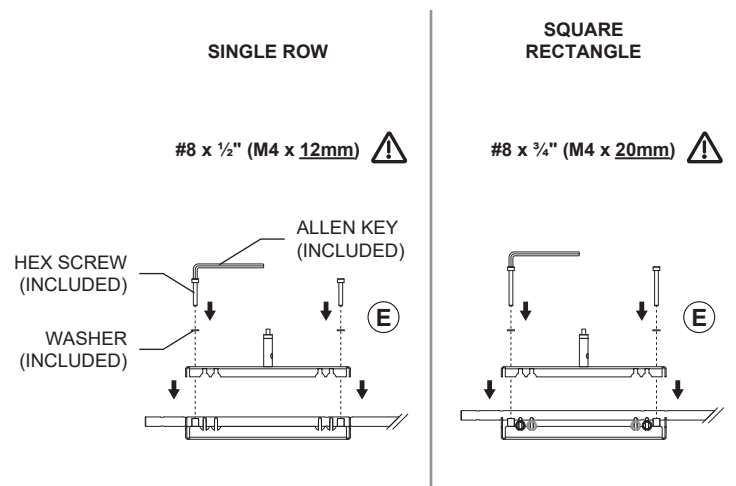
- A- PLACE THE BOTTOM MOUNTING PLATES ON THE FLOOR (**SEE DISTANCES BELOW**).
- B- INSERT THE SUPPORT RODS INTO EACH MOUNTING PLATES. TO INSTALL MULTIPLE SETS OF RODS IN A ROW, ALTERNATE BETWEEN THE INSIDE AND OUTSIDE MOUNTING PLATE SLOTS. FOR THE ROD EXTREMITIES, USE THE SECOND TO LAST HOLES. FOR CONFIGURATIONS WITH MORE THAN 2 UNITS IN A ROW, LONGER SUPPORT RODS WILL BE PROVIDED.
- C- TO LINK THE ADDITIONAL ROWS, INSERT THE SUPPORT RODS PERPENDICULARLY ON TOP OF THE PREVIOUSLY INSTALLED RODS.
- D- SCREW THE CABLE GRIPPERS (**INCLUDED**) ON THE TOP MOUNTING PLATES (**SEE CONFIGURATIONS BELOW FOR GRIPPER PLACEMENTS**)
- E- SCREW THE TOP MOUNTING PLATE TO THE BOTTOM MOUNTING PLATE USING THE APPROPRIATE (4) HEX SCREWS + WASHERS (**INCLUDED**) USING THE ALLEN KEY (**INCLUDED**). **ATTENTION: SEE HEX SCREW DIMENSIONS BELOW TO USE THE CORRECT SCREW LENGTHS.**



**CABLE GRIPPER CONFIGURATION**

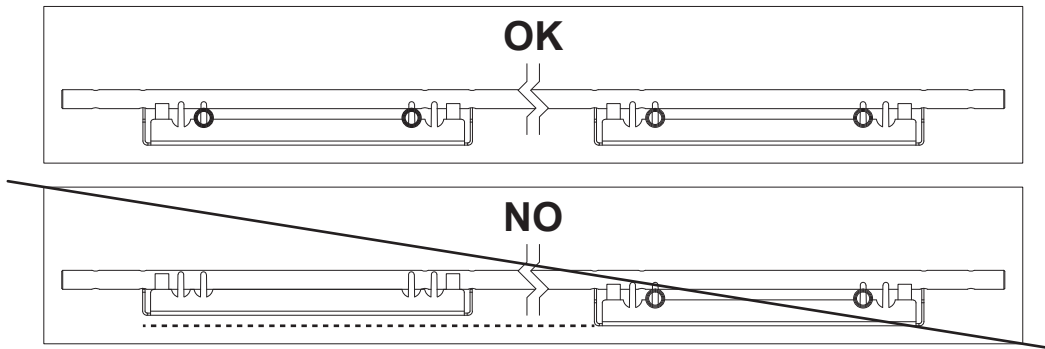
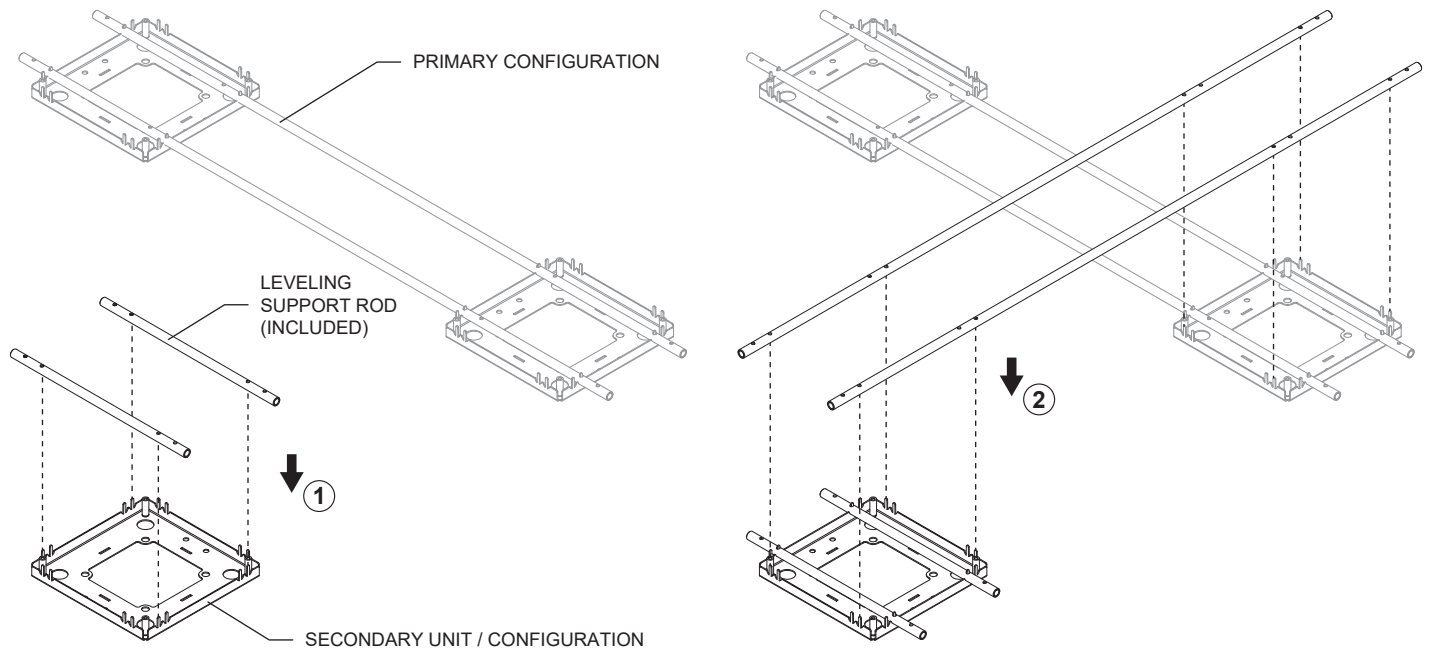


**HEX SCREW DIMENSIONS**



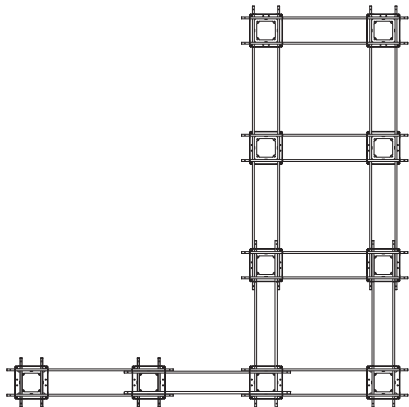
**LEVELING SUPPORT RODS**

WHEN MERGING A SECONDARY SINGLE UNIT OR SINGLE ROW CONFIGURATION TO THE PRIMARY CONFIGURATION (SEE EXAMPLES BELOW), THE LEVELING SUPPORT RODS (INCLUDED) MUST BE ADDED TO INSURE THAT BOTH CONFIGURATIONS ARE LEVELED.

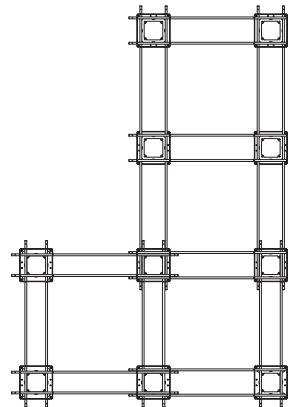


**EXAMPLES**

LEVELING SUPPORT ROD REQUIRED



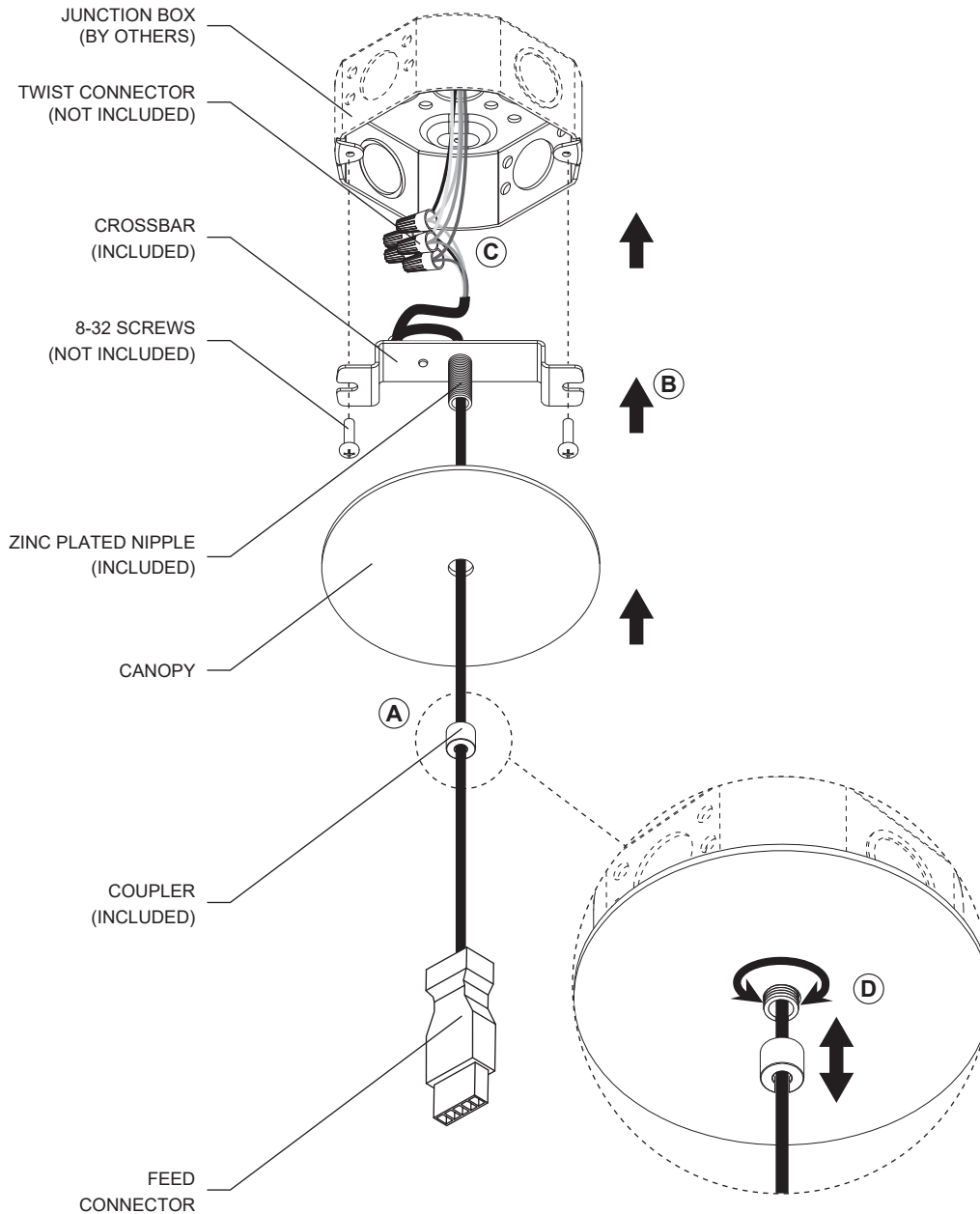
NO LEVELING SUPPORT ROD REQUIRED



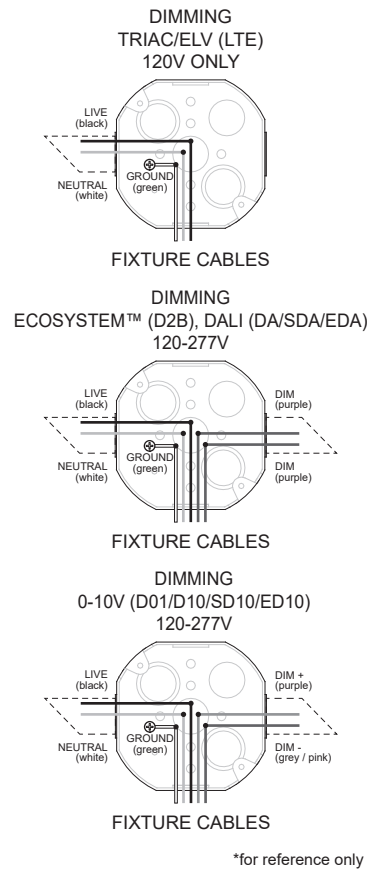
**CANOPY INSTALLATION**

**CANOPY MUST BE INSTALLED OVER A LIGHTED PANEL.**

- A- UNFASTEN THE COUPLER FROM THE CANOPY.
- B- SCREW THE CROSSBAR TO THE JUNCTION BOX USING (2) 8-32 SCREWS (NOT INCLUDED).
- C- MAKE ALL THE NECESSARY CONNECTIONS (SEE WIRING DIAGRAM) USING TWIST CONNECTORS (NOT INCLUDED).
- D- LIFT THE CANOPY UP TO THE CROSSBAR AND SCREW TIGHT THE COUPLER WITH THE ZINC PLATED NIPPLE.

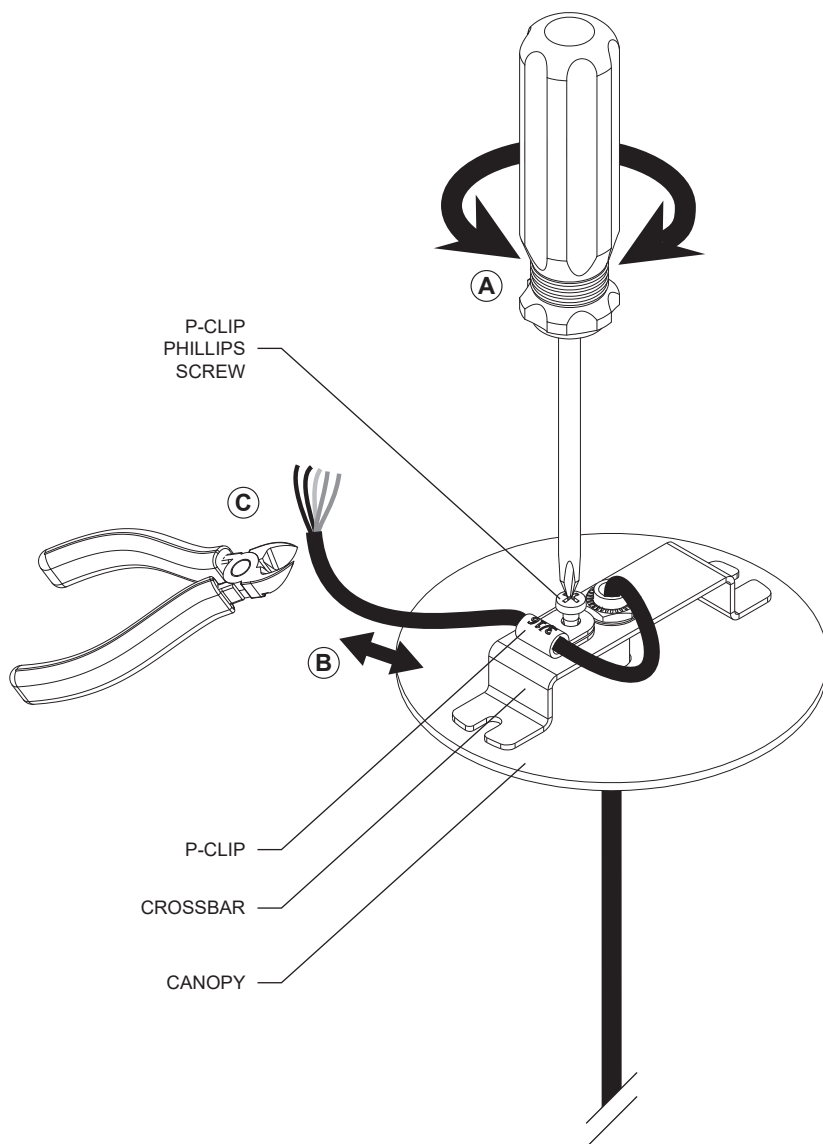


**WIRING DIAGRAM\***



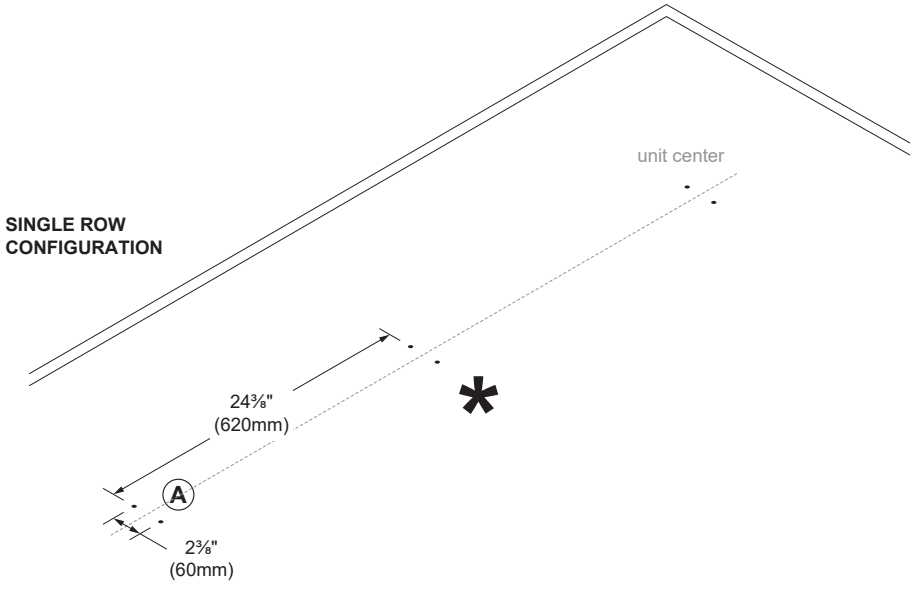
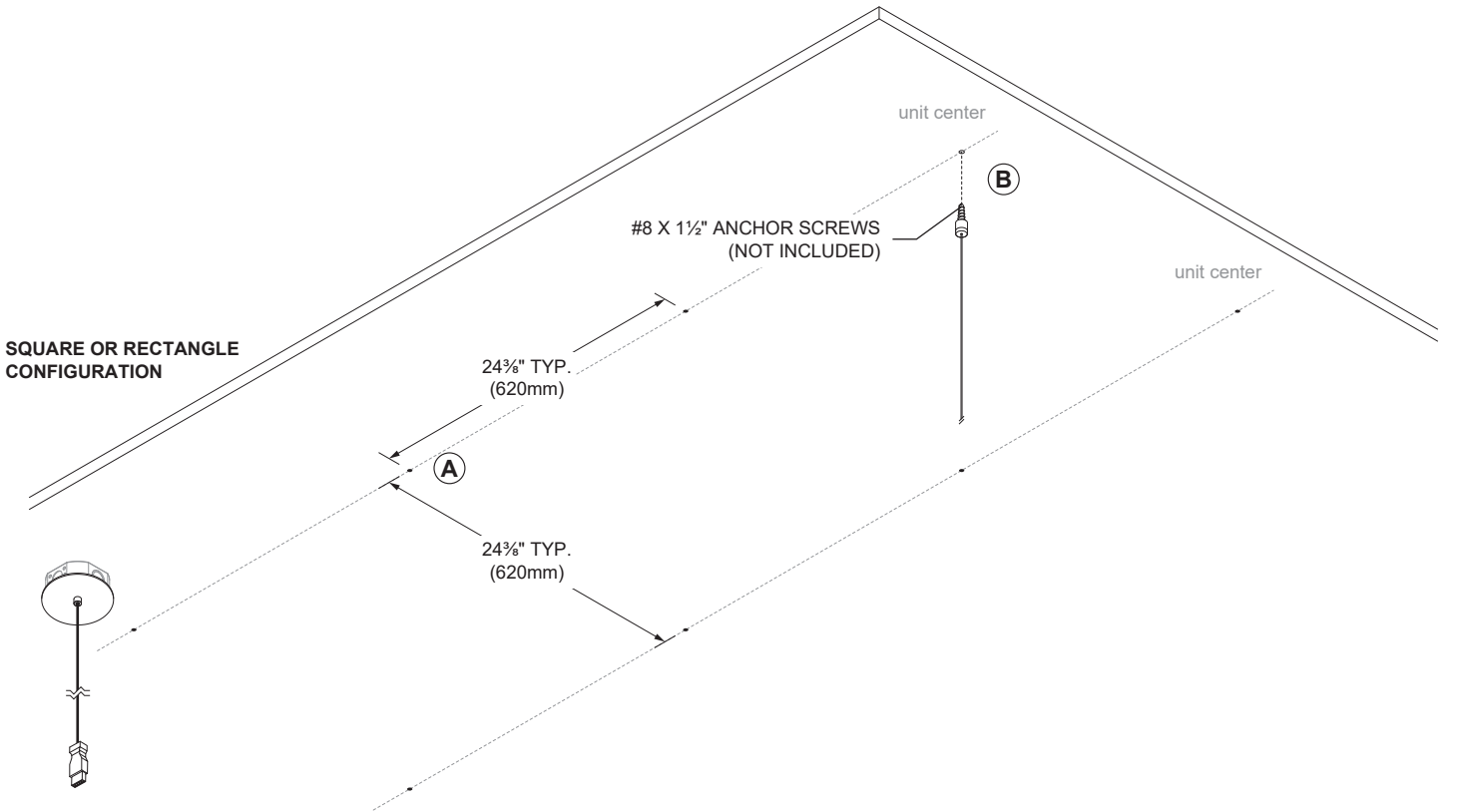
**CABLE LENGTH ADJUSTEMENT**

- A- UNFASTEN THE P-CLIP SCREW ON THE TOP AT THE CROSSBAR.
- B- PULL THE POWER CABLE AND ADJUST TO DESIRED LENGTH. FASTEN THE P-CLIP SCREW.
- C- CUT THE EXCESS CABLE AND MAKE ALL NECESSARY CONNECTIONS (**FOLLOW POLARITY**).

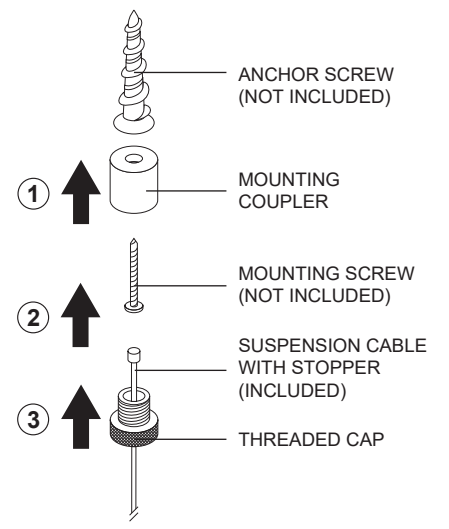


**CEILING PREPARATION**

- A- PREPARE CEILING BY DRILLING HOLES (SEE DIMENSIONS BELOW).  
\* **FOR THE SINGLE ROW CONFIGURATION, A SECOND HOLE MUST BE DRILLED FOR THE ADDITIONNAL ANCHOR SCREW.**
- B- INSTALL ALL THE NECESSARY ANCHOR SCREWS:
  - 1- PASS SCREW THROUGH THREADED RING AND SECURE SCREW INTO PLASTIC ANCHOR SCREW.
  - 2- PASS SUSPENSION CABLE THROUGH MOUNTING COUPLING.
  - 3- FASTEN MOUNTING COUPLING TO THREADED RING.

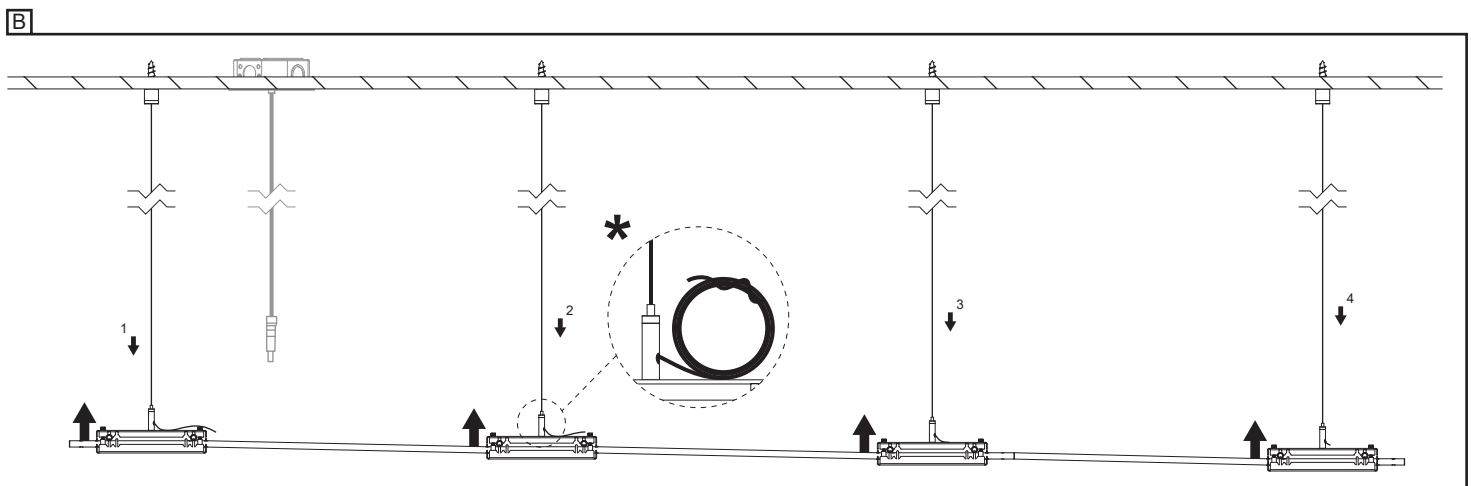
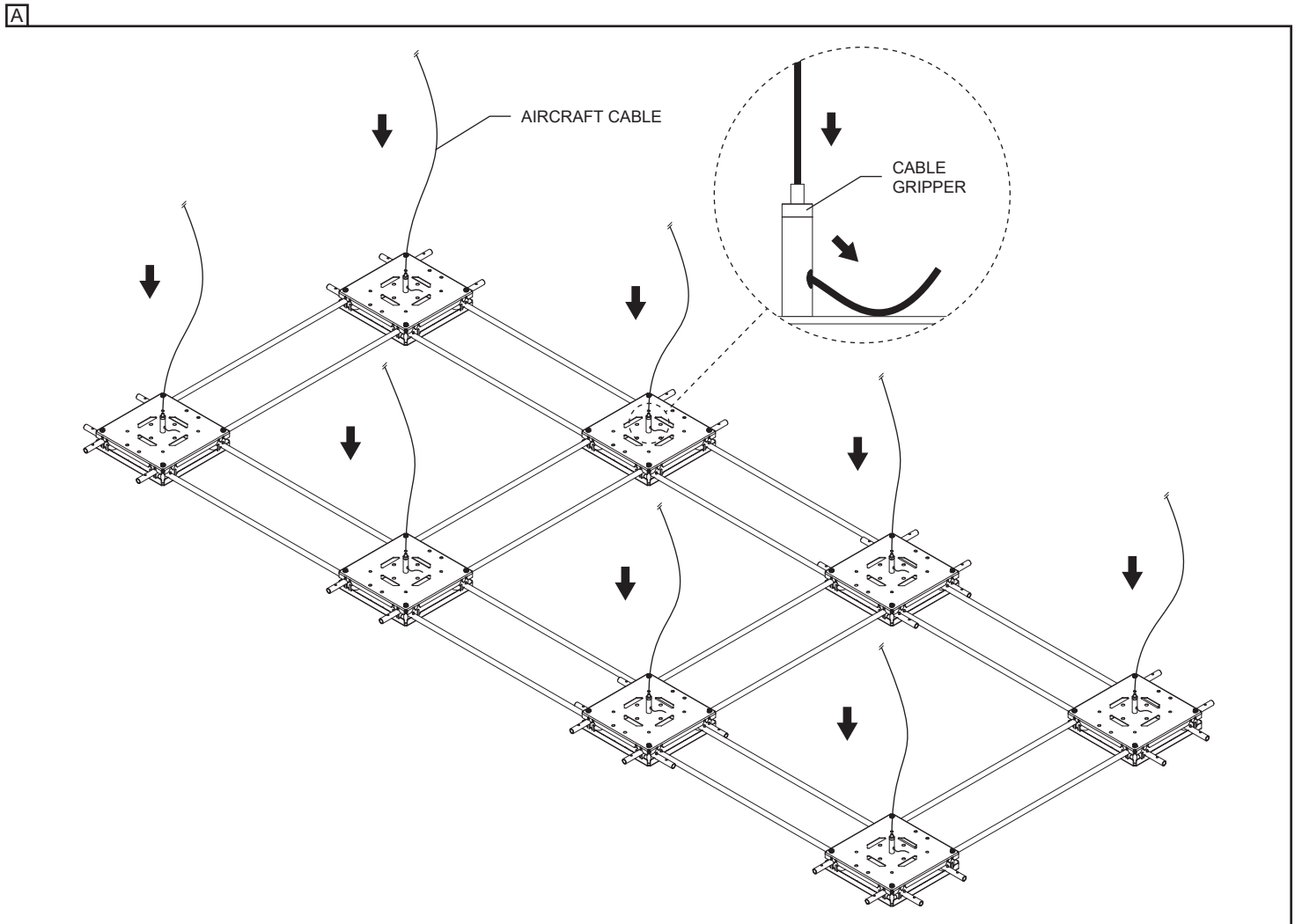


**ANCHOR SCREW ASSEMBLY**



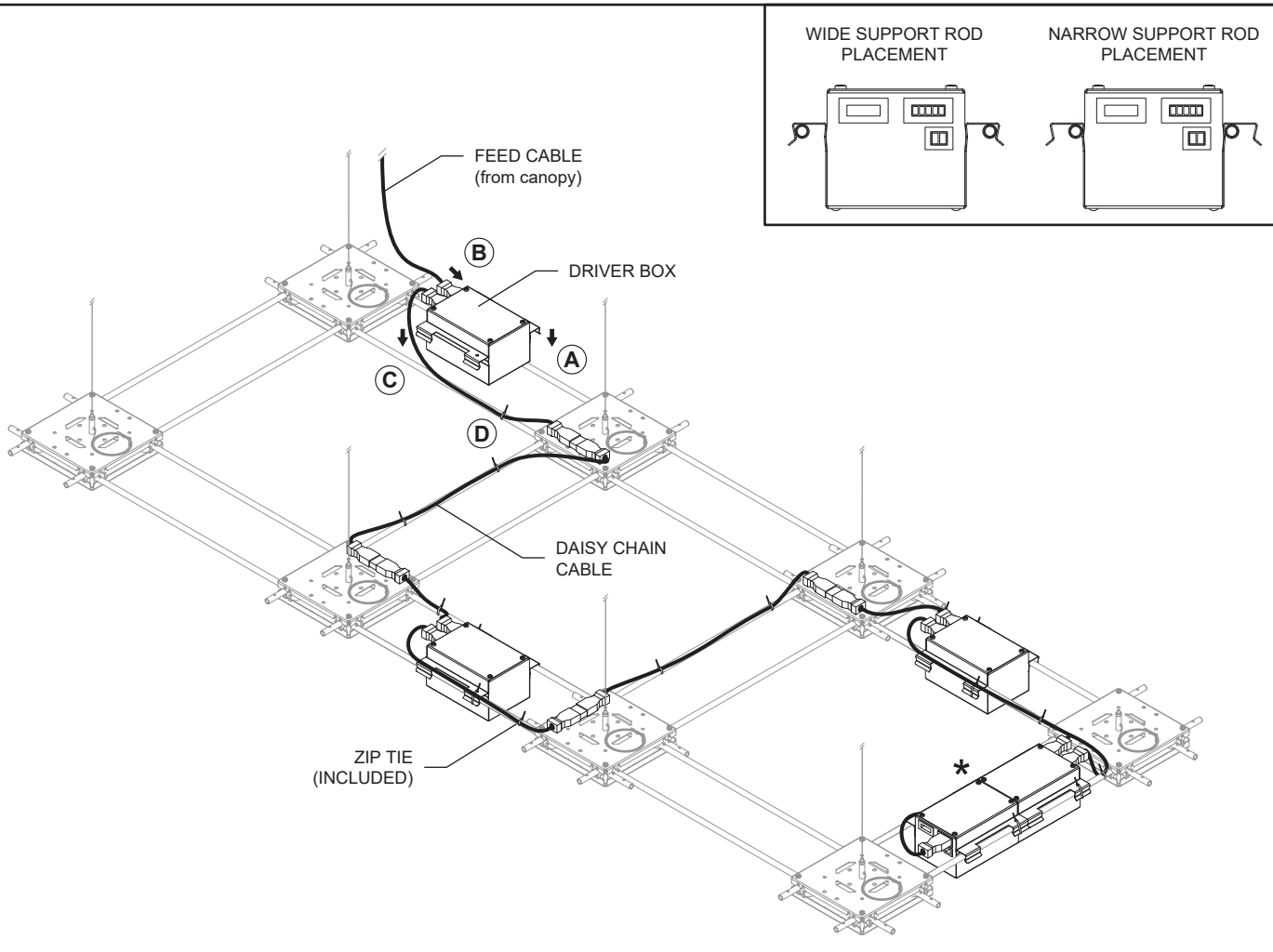
**SUPPORT STRUCTURE CEILING ASSEMBLY**

- A- INSERT EVERY AIRCRAFT CABLES INTO EACH CABLE GRIPPERS.
  - B- SLOWLY PULL EACH AND EVERY CABLES TO ELEVATE THE STRUCTURE TO THE DESIRED HEIGHT. IT IS RECOMMENDED TO ONLY RAISE THE STRUCTURE A FEW INCHES FOR EACH GRIPPER TO MINIMIZE THE STRESS ON THE SUPPORT RODS.
- \* ROLL UP AND STORE THE EXTRA AIRCRAFT CABLE LENGTH.**



**DRIVER BOX INSTALLATION AND CONNECTION**

- A- SNAP ALL THE DRIVER BOXES TO SUPPORT RODS NEXT TO A LIGHTED UNIT.
- B- CONNECT THE FEED CABLE TO THE FIRST DRIVER BOX USING THE QUICK CONNECTORS.
- C- USING THE PROVIDED CABLES, INTERCONNECT ALL THE DRIVER BOXES TOGETHER. \*WHEN INSTALLING (2) DRIVER BOXES ON A SET OF SUPPORT RODS, THEY MUST BE PLACED BACK TO BACK TO HAVE ENOUGH SPACE FOR THE CONNECTORS.
- D- USING THE ZIP TIES (INCLUDED), SECURE THE CABLES TO THE SUPPORT RODS.



**UNIT INSTALLATION AND CONNECTION**

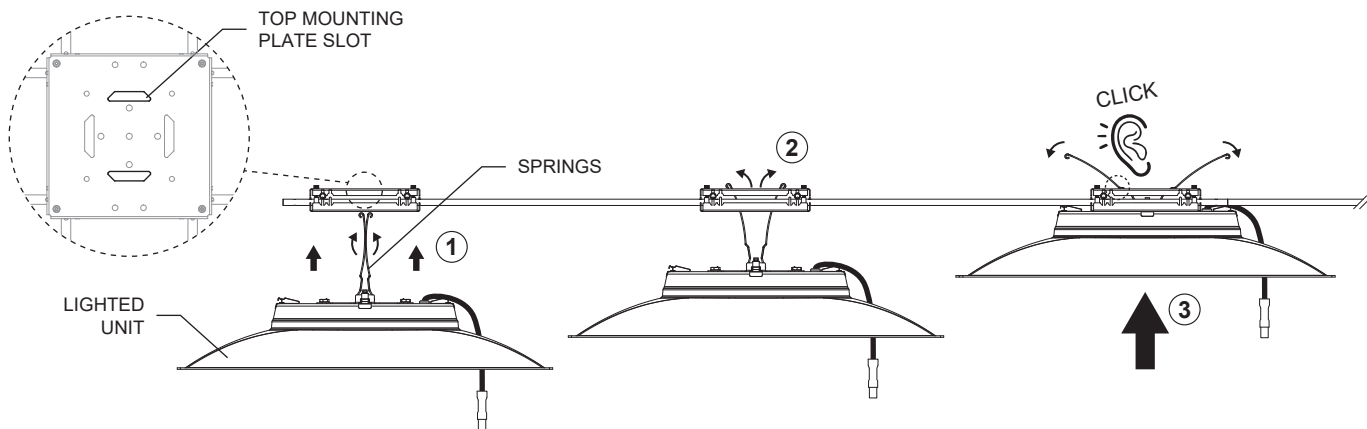
A- INSTALL ALL THE LIGHTED UNITS TO THE MOUNTING PLATES:

- 1- PINCH THE SPRINGS AND PASS THEM THROUGH THE TOP MOUNTING PLATE SLOTS .
- 2- LET GO OF THE SPRINGS, THEY WILL SET THEMSELVES INSIDE THE SLOTS. YOU CAN SAFELY LET GO OF THE UNIT UNTIL NEXT STEP.
- 3- FROM UNDERNEATH THE UNIT, PUSH IT UNTIL THE SPRINGS CLICK AND LOCK IT IN PLACE.

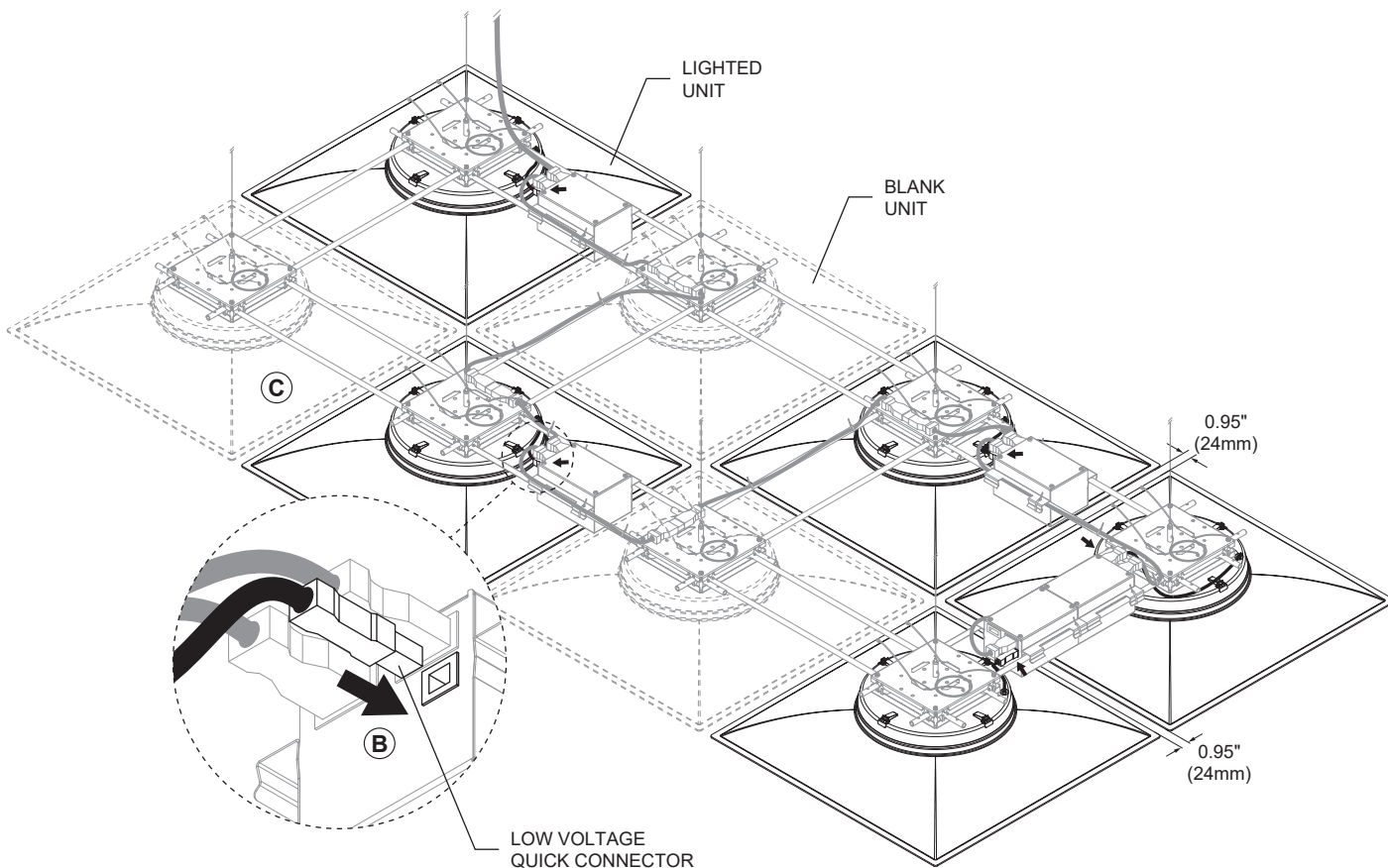
B- CONNECT THE LIGHTED UNIT TO THE DRIVER BOXES USING THE LOW VOLTAGE QUICK CONNECTOR.

C- REPEAT STEP A FOR THE REST OF THE BLANK UNITS.

**A**



**B + C**





**REFERENCE IGUZZINI COMPONENT**

PART NUMBER	CCT	CRI	TYPE	DIMENSIONS
RR91	3000	80	REGULAR LIGHTED	LIGHT SHED 596x596
RR92	3000	90	REGULAR LIGHTED	LIGHT SHED 596x596
RR93	4000	80	REGULAR LIGHTED	LIGHT SHED 596x596
RR94	4000	90	REGULAR LIGHTED	LIGHT SHED 596x596
RR95	3500	80	REGULAR LIGHTED	LIGHT SHED 596x596
RR96	3500	90	REGULAR LIGHTED	LIGHT SHED 596x596
RR97	2700	90	REGULAR LIGHTED	LIGHT SHED 596x596
PF64	/	/	REGULAR UNLIGHTED	LIGHT SHED 596x596
PF65	/	/	REGULAR UNLIGHTED + ACC	LIGHT SHED 596x596
RR99	3000	80	ACCOUSTIC LIGHTED	LIGHT SHED dB 60 596x596
RS00	3000	90	ACCOUSTIC LIGHTED	LIGHT SHED dB 60 596x596
RS01	4000	80	ACCOUSTIC LIGHTED	LIGHT SHED dB 60 596x596
RS02	4000	90	ACCOUSTIC LIGHTED	LIGHT SHED dB 60 596x596
RS03	3500	80	ACCOUSTIC LIGHTED	LIGHT SHED dB 60 596x596
RS04	3500	90	ACCOUSTIC LIGHTED	LIGHT SHED dB 60 596x596
PS05	2700	90	ACCOUSTIC LIGHTED	LIGHT SHED dB 60 596x596
RF66	/	/	ACCOUSTIC UNLIGHTED	LIGHT SHED dB 60 596x596
RF67	/	/	ACCOUSTIC UNLIGHTED + ACC	LIGHT SHED dB 60 596x596