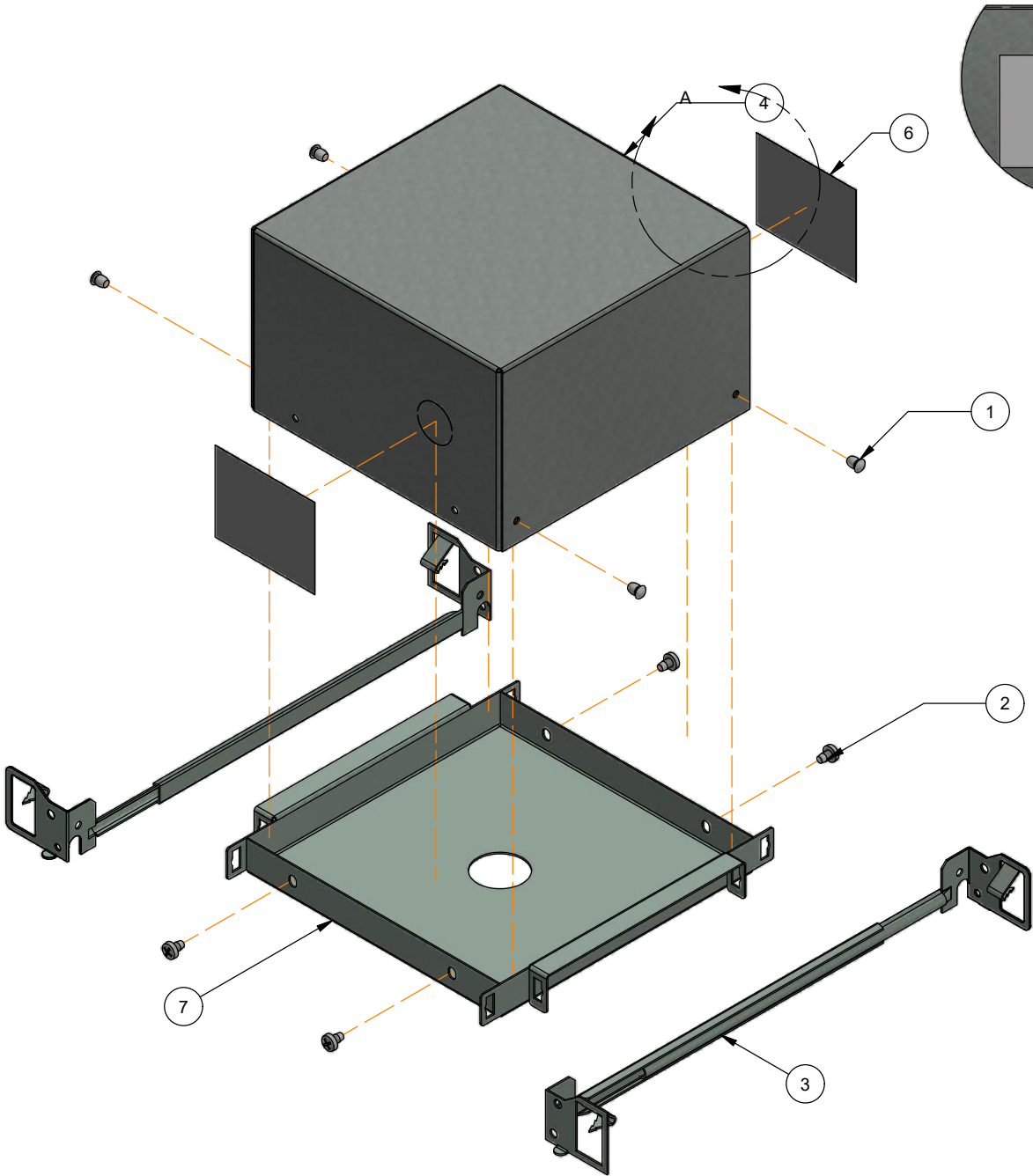


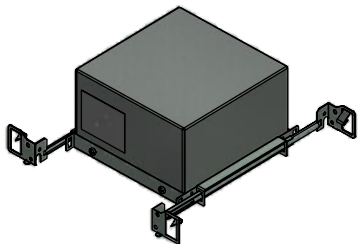
LISTE DE COMPOSANTES			
ITEM	DESCRIPTION	QTÉ.	ARTICLE
1	POP RIVET, Ø1/8", 0.265"L, TÊTE Ø1/4" , ALUMINIUM / ACIER	4	FAS-217
2	VIS AUTO-TARAUDEUSE (TYPE 23) PAN À PRISE PHILIPS, 8-32 X 0.25"L, ACIER ZINGUÉ	4	FAS-450
3	BARRE DE RETENUE METAL MALE/FEMALE 9" TO 15"	2	HOU-695
4	HOUSING LASER, 6.30"x6.30"x3.94", 22GA GALVANIZED	1	HOU-1323
5	SILICONE UL94 RATED (OUTIL-222), 300 ml	0.0625	OUTIL-222
6	3M SILVER FOIL TAPE 3340, 2-1/2" x 50 yd, 4.0 mil, UL 181A-P	2 x 1.5in	OUTIL-706
7	PLASTER FRAME,7.33"x7.33"x0.82",Ø1.125",22GA,GALV.S	1	PFR-048

S'ASSURER DE BIEN  
BOUCHER LES  
KNOCKOUT AVEC  
L'OUTIL-706

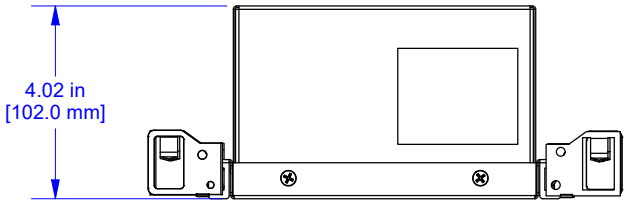


VUE EXPLOSÉE  
1/3

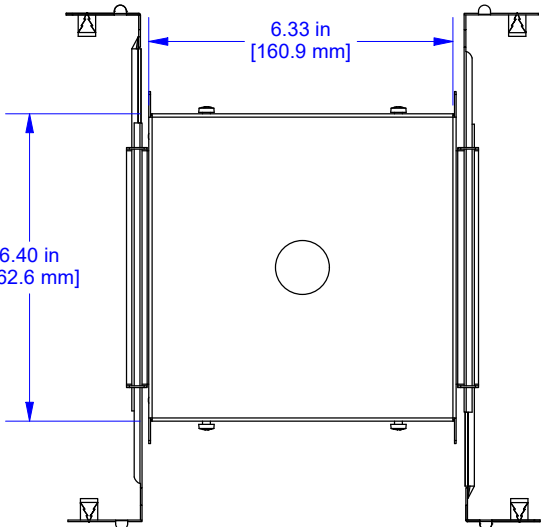
DETAIL A  
1/3



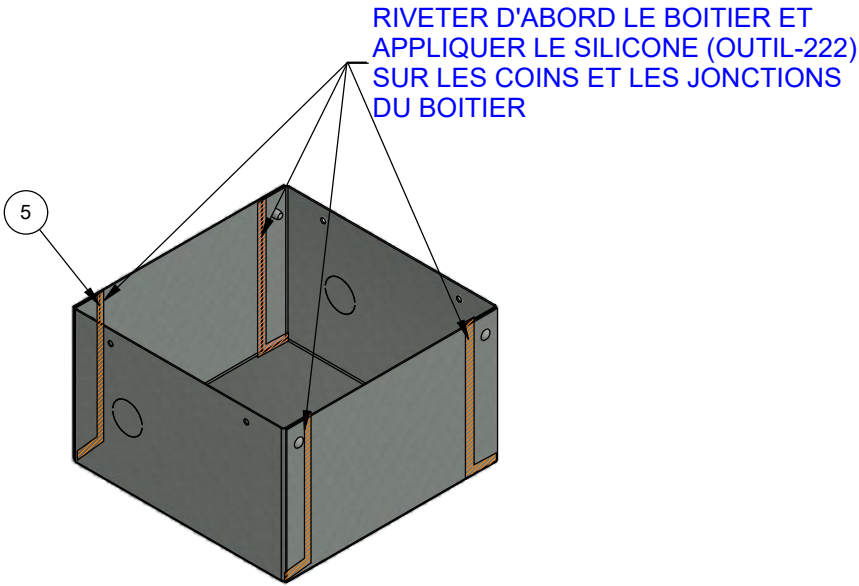
VUE ISOMÉTRIQUE  
1:8




VUE DE FACE  
1:4



VUE DE DESSOUS  
1:4



VUE ISOMÉTRIQUE  
1:4

dessiné par:	<b>iGuzzini</b> NORTH AMERICA 9320 Boul. St-Laurent #100 Montreal, Quebec H2N 1N7 CANADA	créé le:	page :
CS		2021-11-29	1 / 1
app. par:	titre:		
AGB	BOITIER CHICAGO PLENUM LASER FIXED25mm TR,REM		
projection:	no. pièce:		
	BI-LAS25RT-CP		