

Laser blade is a collection of recessed downlights for architectural applications. Laser Blade optics have evolved through the adoption of Opti Diamond technology, the outcome of a detailed study into materials, engineering and processes that optimise the catadioptric principle, with the result of extraordinary brilliance just like a diamond. Laser blade space is available in 3 aperture size, trim or trimless with generous outputs of up to 2646 lumens and excellent chromatic performance .

**NOW ASSEMBLED IN NORTH AMERICA.**

**Luminaire characteristic:**

**Power input:** 9.8W to 29W (source wattage)  
**Lumens:** 882lm to 2604lm (for 3000K, 92CRI)  
**Luminaire efficacy:** up to 90lm/W

<b>Source:</b>	White LED module (LM-80) 2700K: 92CRI (90CRI min), 3000K: 92CRI (90CRI min), 3500K: 92CRI (90CRI min), 4000K: 92CRI (90CRI min).
<b>Lumen maintenance:</b>	90% of initial lumens at 50 000 hours (L90) (LM-79).
<b>Optics:</b>	Wide flood optic with Opti Diamond technology.
<b>Material:</b>	Body and heat sink: Die-cast aluminum Reflector and baffle: Thermoplastic Housing: Galvanized steel
<b>Mounting:</b>	New construction housing suitable for insulated ceiling.
<b>Electrical:</b>	High efficiency LED driver, rated at 50 000 hours. See remote LED driver options on page 3.
<b>Finish:</b>	Black or white (RAL9010) body with transparent baffle (page 2).
<b>Weight:</b>	ILB05: 0.66lbs (0.30kg) ILB10: 1.32lbs (0.60kg) ILB15: 1.90lbs (0.86kg)
<b>Warranty:</b>	5 year limited warranty.
<b>Ratings:</b>	IP20, IP23 (from under the ceiling)
<b>Certification:</b>	cULus listed for damp location. Interior use only.



**Assembled in North America.**

## ORDERING INFO

**ILB** - **- IC -** **- WF - REM -**  
FIXTURE

**BI - LB** - **- IC - REM**  
HOUSING

## MODEL

☐ **05** - Five☐ **10** - Ten☐ **15** - Fifteen

## MOUNTING

☐ **TR** - Trim☐ **TL** - Trimless

## INSTALLATION TYPE

☒ **IC** - New construction insulated ceiling

## LED

☐ **027** - 2700K, 92CRI<sup>(1)</sup>☐ **030** - 3000K, 92CRI<sup>(1)</sup>☐ **035** - 3500K, 92CRI<sup>(1)</sup>☐ **040** - 4000K, 92CRI<sup>(1)</sup>

## OPTIC

☒ **WF** - Wide flood 47°

## VOLTAGE

☒ **REM** - Remote☐ **POE** - Power over ethernet. (consult customer service)

## FINISH (trim finish / baffle finish)

☐ **D8** - White / transparent☐ **83** - Black / transparent

## Trimless

☐ **24** - Transparent

<sup>(1)</sup> 92CRI typical - 90CRI minimum.

## REMOTE LED DRIVER OPTIONS (TO BE ORDERED SEPARATELY)

							ILB05 9.8W*	ILB10 20W*	ILB15 29W*
Watts	Voltage	Rated	Dimming protocol	Dimming range	Dimensions	Max distance**	Min-max units		
<b>4450-0700-012-120-LTE</b>							1		
12	120V	Indoor	Leading and trailing edge (ELV and TRIAC)	Down to $\pm 15\%$	8" x 8" x 4" (203 x 203 x 102mm)	30ft(9m)			
<b>4443-0700-014-UNV-D2</b>							1		
14	120-277V	Indoor	Lutron Hi Lume® 1% EcoSystem™ (Soft-on, Fade to Black)	Down to $\pm 1\%$	5" x 4" x 3" (127 x 102 x 76mm)	30ft(9m)			
<b>4444-0700-022-120-LTE</b>							1-2	1	
22	120V	Indoor	Leading and trailing edge (ELV and TRIAC)	Down to $\pm 15\%$	6" x 4" x 3" (152 x 102 x 76mm)	30ft(9m)			
<b>4443-0700-025-UNV-D2</b>							2	1	
25	120-277V	Indoor	Lutron Hi Lume® 1% EcoSystem™ (Soft-on, Fade to Black)	Down to $\pm 1\%$	5" x 4" x 3" (127 x 102 x 76mm)	30ft(9m)			
<b>4450-0700-030-UNV-SD10</b>							1-2	1	
30	120-277V	Indoor	0-10V ELDOLED SOLOdrive	Down to $\pm 0.1\%$	8" x 8" x 4" (203 x 203 x 102mm)	118ft(36m)			
<b>4443-0700-035-UNV-D2</b>							3		1
35	120-277V	Indoor	Lutron Hi Lume® 1% EcoSystem™ (Soft-on, Fade to Black)	Down to $\pm 1\%$	5" x 4" x 3" (127 x 102 x 76mm)	30ft(9m)			
<b>4445-0700-040-120-LTE</b>							3		1
40	120V	Indoor	Leading and trailing edge (ELV and TRIAC)	Down to $\pm 15\%$	6" x 6" x 3" (152 x 152 x 76mm)	30ft(9m)			
<b>4450-0700-038-UNV-ED10</b>							1-3	1	1
38	120-277V	Indoor	0-10V ELDOLED ECOdrive	Down to $\pm 1\%$	8" x 8" x 4" (203 x 203 x 102mm)	118ft(36m)			
<b>4448-0700-100-UNV-SD10 (4 channels)</b>							1-8 <sup>(1)</sup> 2 per channel	1-4 <sup>(1)</sup> 1 per channel	1-3 <sup>(1)</sup> 1 per channel
100	120-277V	Indoor	0-10V ELDOLED SOLOdrive	Down to $\pm 0.1\%$	10" x 8" x 4" (254 x 203 x 102mm)	118ft(36m)			

\* Wattage requirement for one (1) fixture (Remote fixture only).

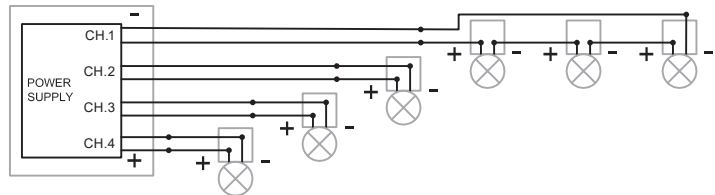
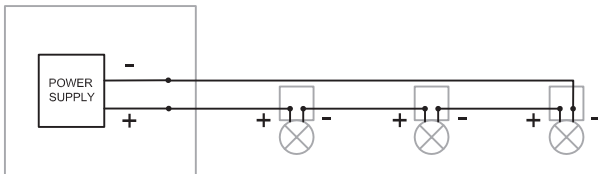
\*\* Calculated for 16AWG cable. Contact customer service for longer remote distance.

## WIRING DIAGRAMS

Multiple luminaires must be connected in series (home run or fixture chain)

<sup>(1)</sup> Luminaires must be connected on separate channels (1-4).

Multiple luminaires can be connected in series on a channel (home run or fixture chain). Do not exceed the wattage and voltage range on each channel.

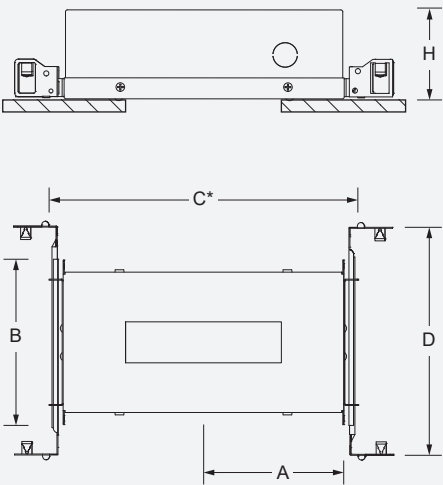


INSTALLATION

New construction with housing (IC)

New construction housing with hanger bars system to be installed during rough-in phase. This installation is suitable for insulated or non-insulated ceiling. housing and trim can be shipped separately.
(Power supply is not accessible from luminaire opening)

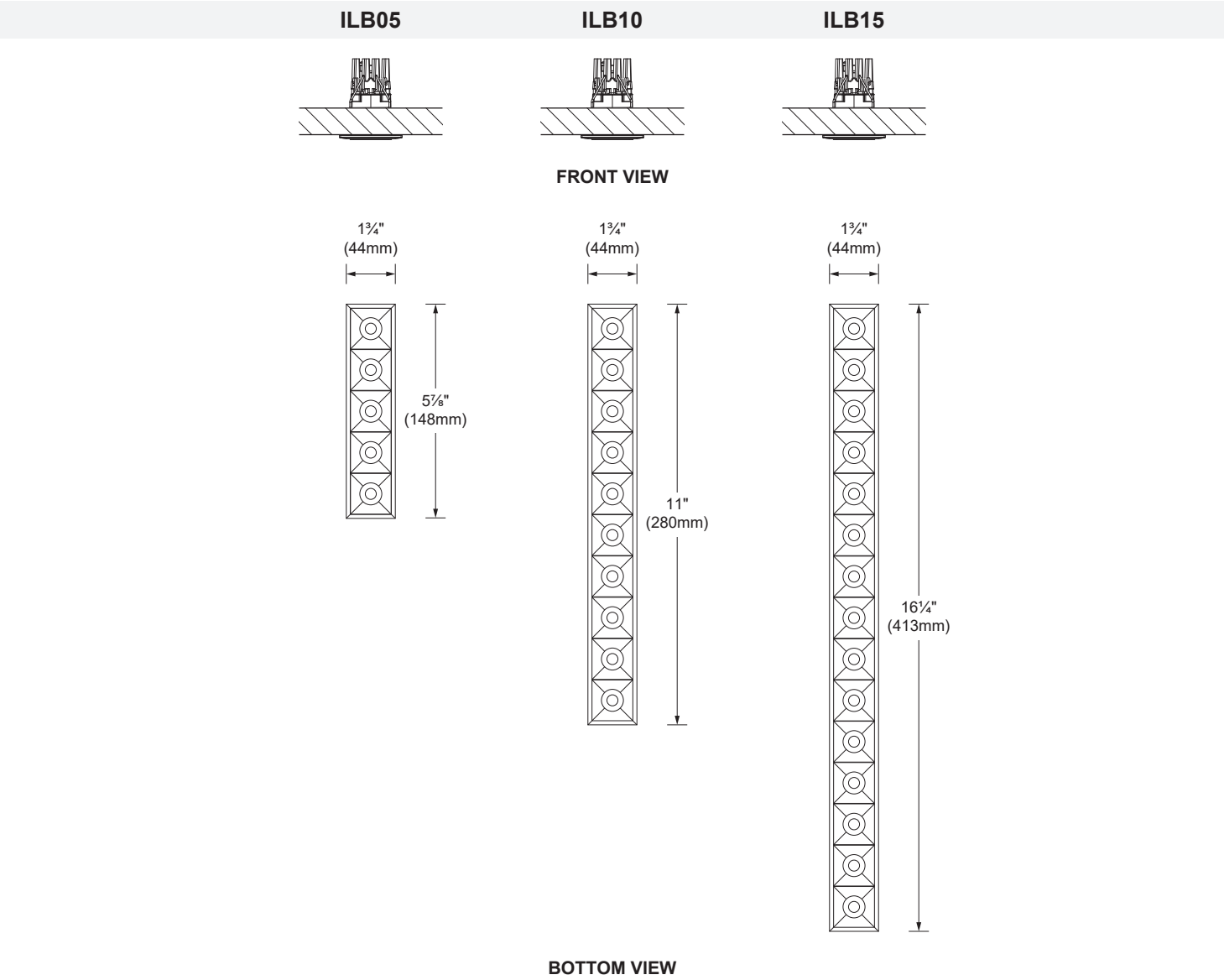
Ceiling thickness:
Trim: 1/8" - 1 1/8" (3mm - 29mm)
Trimless: 3/8" (16mm)



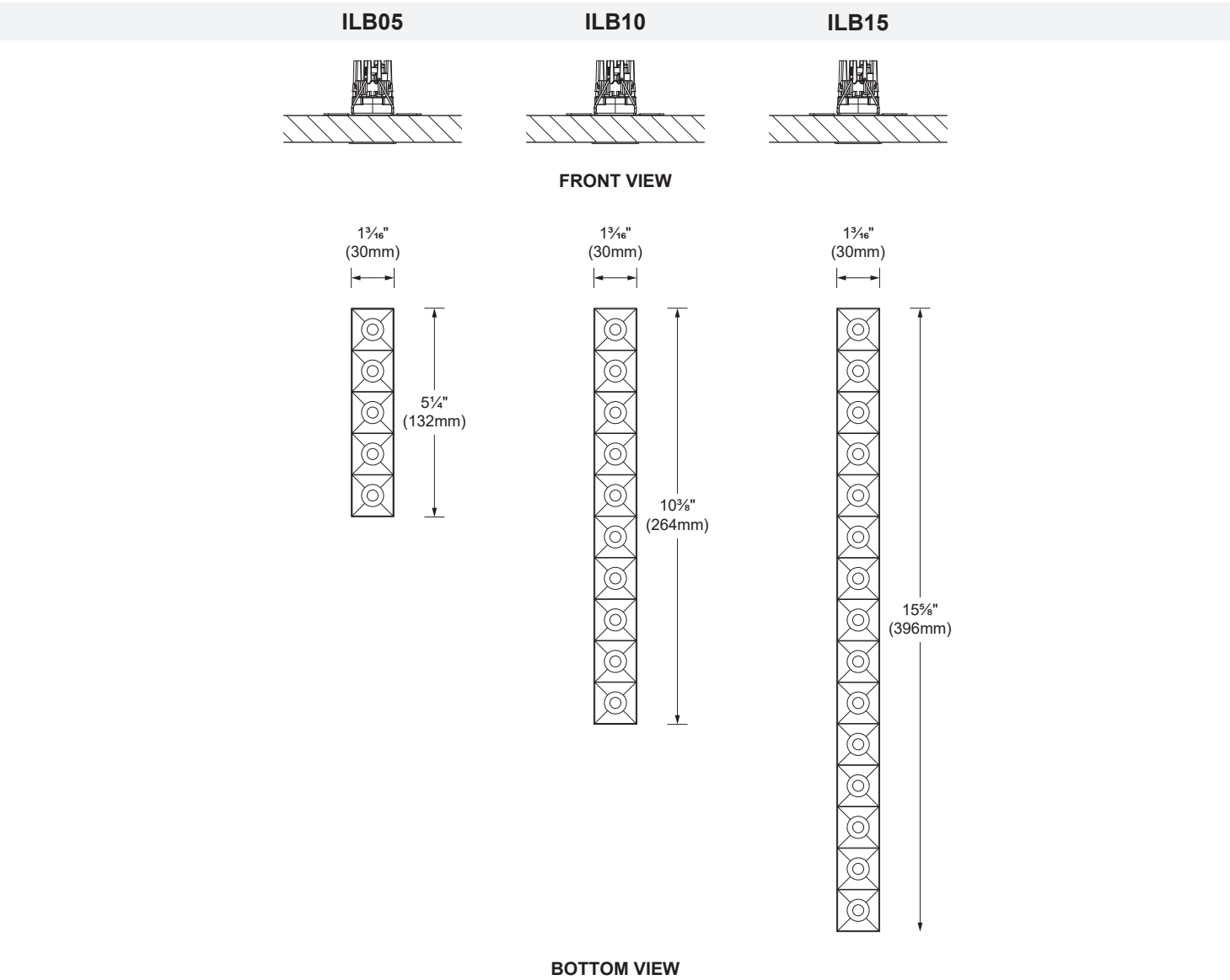
\*Provide a minimum of 1 1/8" (46mm) on each side for the hanger bar fixations

Model	Housing	Cut-out dimensions	Cut-out position (A)	Overall dimensions (BxC)	Hanger bars (D)	Clearance (H)
ILB05	BI-LB05TR-IC-REM	1½" x 5⅝" (37 x 141mm)	5¼" (133mm)	5⅝" x 11" (150 x 280mm)	14¼" to 26" (362 to 660mm)	3⅜" (81mm)
	BI-LB05TL-IC-REM	1⅜" x 5⅝" (35 x 141mm)				
ILB10	BI-LB10TR-IC-REM	1½" x 10⅓⅝" (37 x 274mm)	8⅞" (223mm)	6⅞" x 18⅝" (173 x 460mm)		3½" (89mm)
	BI-LB10TL-IC-REM	1⅜" x 10¾" (35 x 271mm)				
ILB15	BI-LB15TR-IC-REM	1½" x 16" (37 x 406mm)	13⅞" (332mm)	9½" x 25" (242 x 635mm)		
	BI-LB15TL-IC-REM	1⅜" x 15⅝⅝" (35 x 404mm)				

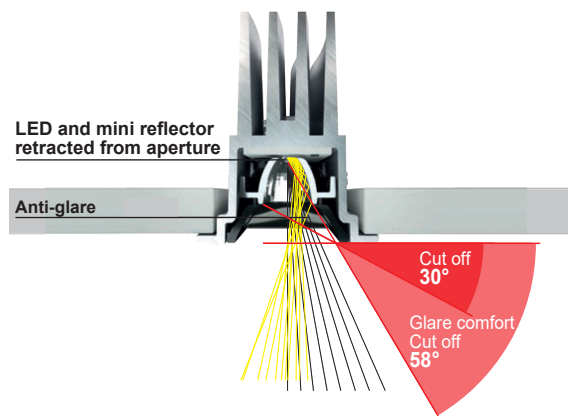
TRIM MODELS DIMENSIONS



TRIMLESS MODELS DIMENSIONS



Visual comfort UGR < 16.



## LED COLOR FIDELITY DATA

CRI	CCT	R1	R2	R3	R4	R5	R6	R7	R8	R9	R10	R11	R12	R13	R14	R15	Rf	Rg	Melanopic ratio
92	2700K	92	96	98	91	91	95	91	79	55	89	92	86	93	98	88	91	100	0.488
	3000K	93	97	98	92	93	95	92	82	60	91	92	82	94	99	90	92	99	0.571
	3500K	92	95	96	92	91	93	93	83	59	87	92	79	93	97	89	92	99	0.635
	4000K	93	94	94	93	92	91	94	86	64	85	93	78	93	96	90	91	100	0.715

## PHOTOMETRIC DATA

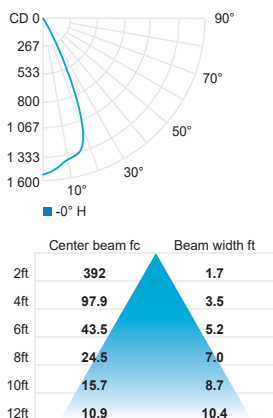
### ILB05



CCT (K)	CRI	LOAD (W)*	OPTIC	LUMENS (lm)	EFFICACY (lm / W)	MAX CANDELA (cd)	MODEL
3000K	92	9.8W	Wide flood 47°	882	90	1 572	ILB05-030-WF

\*For products that uses a remote led driver, total system wattage will varies according to the efficacy of the remote led driver selected. For this reason, the load and efficacy values given in the table above refers to the led source only and does not include the led driver consumption.

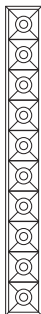
Wide flood 47° (3000K, 92CRI)



CCT options	2700K	3000K	3500K	4000K
CRI options	92CRI	92CRI	92CRI	92CRI
Multiplier	0.95	1	1.05	1.1

## PHOTOMETRIC DATA

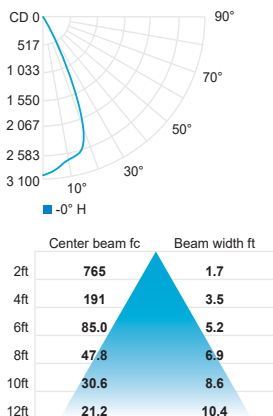
### ILB10



CCT (K)	CRI	LOAD (W)*	OPTIC	LUMENS (lm)	EFFICACY (lm / W)	MAX CANDELA (cd)	MODEL
3000K	92	20W	Wide flood 47°	1 722	86	3 069	ILB10-030-WF

\*For products that uses a remote led driver, total system wattage will varies according to the efficacy of the remote led driver selected. For this reason, the load and efficacy values given in the table above refers to the led source only and does not include the led driver consumption.

#### Wide flood 47° (3000K, 92CRI)



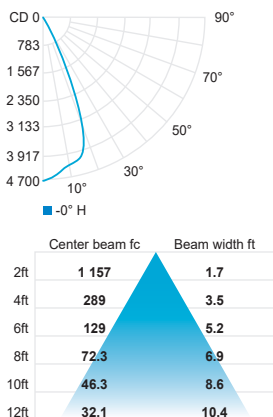
### ILB15



CCT (K)	CRI	LOAD (W)*	OPTIC	LUMENS (lm)	EFFICACY (lm / W)	MAX CANDELA (cd)	MODEL
3000K	92	29W	Wide flood 47°	2 604	89	4 641	ILB15-030-WF

\*For products that uses a remote led driver, total system wattage will varies according to the efficacy of the remote led driver selected. For this reason, the load and efficacy values given in the table above refers to the led source only and does not include the led driver consumption.

#### Wide flood 47° (3000K, 92CRI)



CCT options	2700K	3000K	3500K	4000K
CRI options	92CRI	92CRI	92CRI	92CRI
<b>Multiplier</b>	<b>0.95</b>	<b>1</b>	<b>1.05</b>	<b>1.1</b>