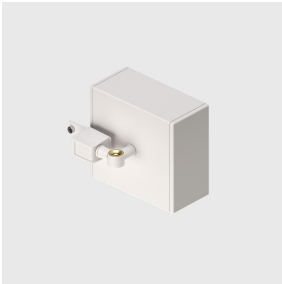


Last information update: July 2025



Accessory code

PE77: Surface-mounted base for power supply with an end cap

Technical description

Surface-mounted base with swivel joint for remote power supply with an end cap. Option of end cap that rotates 360° around its own axis.

Colour

White (01) | Black (04) | Titanium (N8) | Sapphire blue (N9)

Weight (Kg)

0.42

Complies with EN60598-1 and pertinent regulations



IP20

