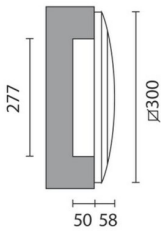
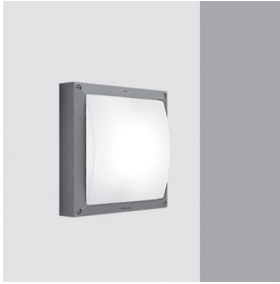


Last information update: February 2023

Product configuration: B573+1764

B573: Recessed fixture 26/32 W TC-TEL

**Product code**B573: Recessed fixture 26/32 W TC-TEL **Attention! Code no longer in production****Technical description**

Recessed wall and ceiling luminaire for external residential public areas using 26/32 W TC-TEL compact fluorescent lamps. The fitting comprises a die-cast aluminium frame, a polycarbonate diffuser and an EPDM sealing gasket to guarantee IP66. Polycarbonate optical assembly with polycarbonate cover to guarantee Insulation Class Insulation II. All fittings are provided with PG11 cable-clamp for perfect sealing where the power supply cable is inserted. The stainless steel screws with hexagonal head and the materials used guarantee excellent resistance to external agents.

Installation

Fixed to the wall or the ceiling with no. 3 4 mm fischer screws placed at 120°.

Colour

White (01) | Grey (15)

Mounting

wall recessed

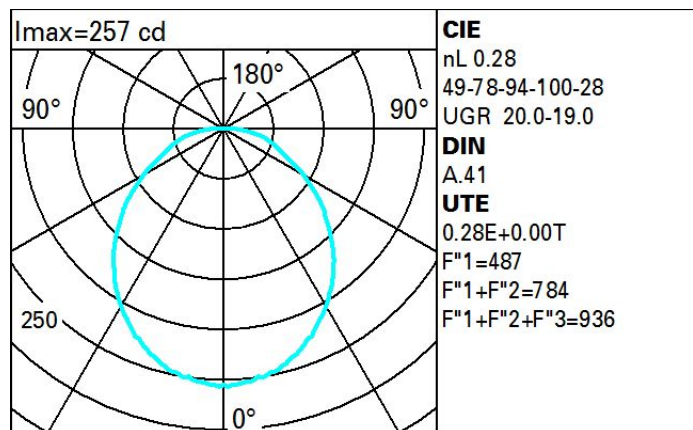
Wiring

Control gear inside the fitting including: 230V 50Hz very low-loss electronic ballasts, 3-pole fast coupling terminal block, anti-radio interference filter and silicone cables. Possibility of separate switching.

Complies with EN60598-1 and pertinent regulations

**Technical data**

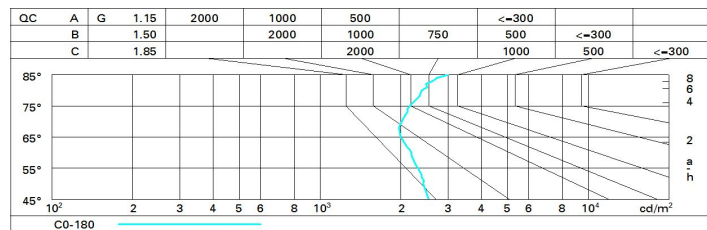
Im system:	672	Colour temperature [K]:	2700
W system:	35	Ballast losses [W]:	3
Im source:	2400	Voltage [Vin]:	230
W source:	32	Lamp code:	1764
Luminous efficiency (Im/W, real value):	19.2	Socket:	GX24q-3
Im in emergency mode:	-	Number of lamps for optical assembly:	1
Total light flux at or above an angle of 90° [Lm]:	0	ZVEI Code:	TC-TEL
Light Output Ratio (L.O.R.) [%]:	28	Number of optical assemblies:	1
CRI:	90	Intervallum temperatura ambiente:	from -20°C to +35°C.

Polar

Utilisation factors

R	77	75	73	71	55	53	33	00	DRR
K0.8	19	16	13	12	15	13	13	11	40
1.0	20	18	16	14	17	15	15	13	47
1.5	23	21	19	18	20	19	18	17	59
2.0	25	23	21	20	22	21	21	19	68
2.5	26	24	23	22	24	22	22	20	73
3.0	26	25	24	23	25	24	23	22	77
4.0	27	26	25	24	26	25	24	23	82
5.0	28	27	26	25	26	26	25	24	85

Luminance curve limit



UGR diagram

Corrected UGR values (at 2400 lm bare lamp luminous flux)											
Riflect.: ceil/cav walls work pl. Room dim x y		0.70	0.70	0.50	0.50	0.30	0.70	0.70	0.50	0.50	0.30
		0.50	0.30	0.50	0.30	0.30	0.50	0.30	0.50	0.30	0.30
		0.20	0.20	0.20	0.20	0.20	0.20	0.20	0.20	0.20	0.20
		viewed crosswise					viewed endwise				
2H	2H	15.3	16.5	15.6	16.8	17.0	15.3	16.5	15.6	16.8	17.0
	3H	16.8	17.9	17.1	18.2	18.5	15.8	16.8	16.1	17.1	17.4
	4H	17.5	18.6	17.9	18.9	19.2	15.9	16.9	16.3	17.3	17.6
	6H	18.4	19.3	18.7	19.6	20.0	16.0	17.0	16.4	17.3	17.6
	8H	18.7	19.6	19.1	20.0	20.3	16.0	16.9	16.4	17.3	17.6
	12H	19.0	19.9	19.4	20.3	20.7	16.0	16.9	16.4	17.2	17.6
4H	2H	15.9	16.9	16.3	17.3	17.6	17.5	18.6	17.9	18.9	19.2
	3H	17.6	18.5	18.0	18.9	19.2	18.2	19.1	18.6	19.5	19.9
	4H	18.6	19.4	19.0	19.7	20.2	18.6	19.4	19.0	19.7	20.2
	6H	19.6	20.3	20.0	20.7	21.1	18.9	19.6	19.3	20.0	20.4
	8H	20.0	20.6	20.4	21.1	21.5	19.0	19.6	19.4	20.1	20.5
	12H	20.4	21.0	20.9	21.4	21.9	19.0	19.6	19.5	20.1	20.5
8H	4H	19.0	19.6	19.4	20.1	20.5	20.0	20.6	20.4	21.1	21.5
	6H	20.2	20.7	20.7	21.2	21.7	20.5	21.0	21.0	21.5	22.0
	8H	20.7	21.2	21.2	21.7	22.2	20.7	21.2	21.2	21.7	22.2
	12H	21.3	21.7	21.8	22.2	22.7	20.9	21.4	21.5	21.9	22.4
12H	4H	19.0	19.6	19.5	20.1	20.5	20.4	21.0	20.9	21.4	21.9
	6H	20.3	20.8	20.8	21.3	21.8	21.0	21.5	21.5	21.9	22.4
	8H	20.9	21.4	21.5	21.9	22.4	21.3	21.7	21.8	22.2	22.7
Variations with the observer position at spacing:											
S =	1.0H	0.1 / -0.1					0.1 / -0.1				
	1.5H	0.2 / -0.3					0.2 / -0.3				
	2.0H	0.3 / -0.4					0.3 / -0.4				