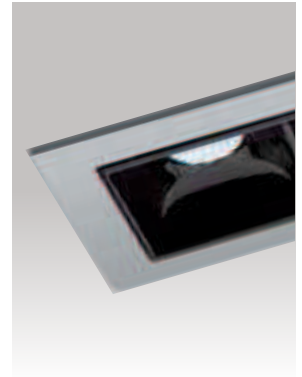




Project name: _____

Type: _____



Low luminance architectural downlight.

Luminaire characteristics:

Power input: 4.2W

Lumens: 282lm (delivered)

Luminaire efficacy: 67lm/W

Source: White LED, (LM-80 tested)
3000K: 97CRI (min>90CRI).

Lumen maintenance: >80% of initial lumens at 50 000 hours (L80)
LM-79 tested.

Optics: low luminance: 32 degree optic, with Optibeam technology.

Mounting: New construction housing suitable for insulated ceilings.

Material:

Body: Die-cast aluminum body and heat sink

Reflector: thermoplastic

Baffles: thermoplastic

Housing: Galvanized steel housing

Electrical: Integral high efficiency electronic driver, rated at 50 000 Hours. 120V-277V.

Finish: White (RAL9010).

Weight: 0.2 lbs (0.09 kg)

Warranty: 5 year limited warranty.

Certification: cULus listed for damp location.

Ratings: IP20



LASER BLADE 2

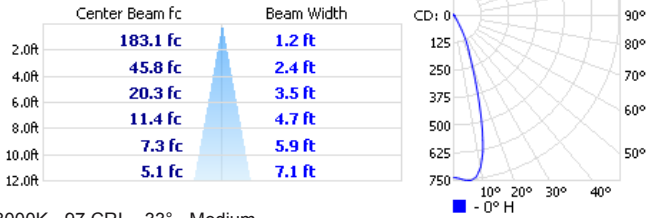
DOWNLIGHT

Project name: _____

Type: _____

TECHNICAL DATA

LOAD	OPTIC	CCT	CRI	DELIVERED LUMENS	LUMINAIRE EFFICACY	CENTER BEAM CANDLE POWER	MODEL
(W)		(K)		(lm)	(lm / w)	(cd)	
4.2W	MEDIUM - 32°	3000K	97	282	67	946	I.MQ76

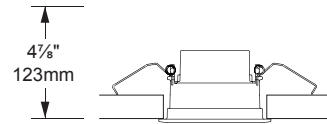


3000K - 97 CRI - 33° - Medium

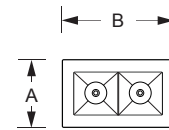
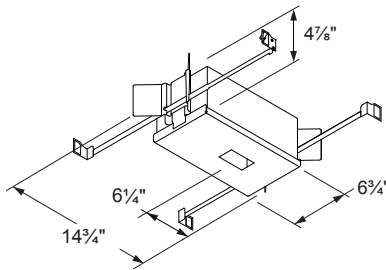
HOUSING

BI5102 - New construction housing also suitable for insulated ceiling

Dimensions: 6¼" x 14¼", h: 4⅞" (171mm x 373mm, h: 123mm)
Hanger bars: 9" to 15¼" (229mm x 387mm)
Clearance: 4⅞" (123mm)



SECTION VIEW



BOTTOM VIEW

INSTALLATION INFO

Ceiling thickness: Min: 1/8" (3mm), Max 1 1/8" (29mm)
Cut-out dimensions: 1 3/8" x 2 1/2" (35mm x 64mm)

		A	B
Trim	in	1 3/4	2 7/8
	mm	44	73

ORDERING INFO

MODEL	VOLTAGE	FINISH	MOUNTING
MODEL		FINISH	FINISH
<input type="radio"/> I.MQ76 - 3000K, Medium, 97CRI(min>90CRI)	<input type="radio"/> UNV - 120-277V	<input type="radio"/> 01 - White	<input type="radio"/> BI5102 - New construction housing