



Laser is a collection of recessed downlights for architectural applications. Excellent build quality with features for the most demanding professional applications. Available in 4 apertures with complete light distributions offering with fixed optics. Generous light outputs with excellent chromatic performance and enhanced visual comfort (UGR<16).

Luminaire characteristic:

Power input: 2W
Lumens: Up to 121lm (for 3000K, 90CRI)
Luminaire efficacy: Up to 60lm/W

Source:

COB LED module (LM-80)
2700K: 90CRI,
3000K: 90CRI,
3500K: 90CRI,
4000K: 80CRI, 90CRI.

Lumen maintenance:

80% of initial lumens at 69 000 hours (L80) (LM-79).

Optic:

Fixed: Deep recessed reflector available with spot and medium optic.
Visual comfort: UGR < 16

Material:

Body: Die-cast aluminum optical assembly
Optic: PMMA lens
Baffle: Painted thermoplastic

Mounting:

Remodel, new construction with plaster frame or chicago plenum rated housing, suitable for insulated ceiling.

Electrical:

High efficiency LED driver, rated at 50 000 hours. See remote LED driver options on page 3.

Finish:

Powder coated body and painted metallized baffle. See page 2 for complete offering.

Weight:

0.07lbs (0.03kg).

Warranty:

5 year limited warranty.

Rating:

IP20, IP43 (visible parts once installed)

Certification:



cULus listed for damp location. Interior use only.



ORDERING INFO

ILAS25 R T - - **SCF** - **REM** -
FIXTURE

- **LAS25 R T** -
INSTALLATION



SHAPE

R - Round

MOUNTING

T - Trim

INSTALLATION

RF - Remodel **NC** - New construction **CP** - Chicago plenum

LED

840 - 4000K, 80CRI **927** - 2700K, 90CRI **930** - 3000K, 90CRI **935** - 3500K, 90CRI **940** - 4000K, 90CRI

OPTIC TYPE

SCF - Super comfort fixed

OPTIC

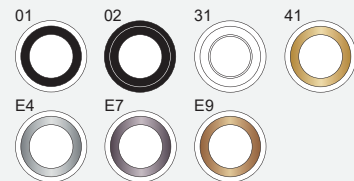
SP - Spot 14° **MD** - Medium 24°

VOLTAGE

REM - Remote

FINISH (trim finish / baffle finish)

01 - White / black **02** - Black / black **31** - White / white **41** - White / gold⁽¹⁾
 E4 - White / chrome⁽¹⁾ **E7** - White / black chrome⁽¹⁾ **E9** - White / gold matte⁽¹⁾



⁽¹⁾ May require a longer lead time than standard. Please contact customer service for details.

REMOTE LED DRIVER OPTIONS
(TO BE ORDERED SEPARATELY)

ILAS25 • FIXED • 2W*

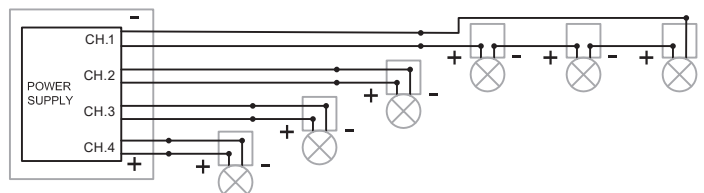
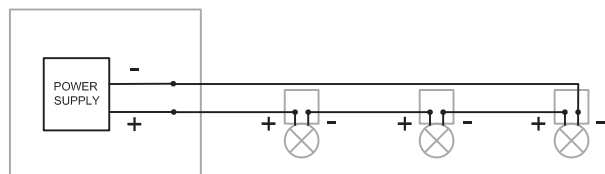
Min-max units	Watts	Voltage	Dimming protocol	Dimming range	Connection box dimensions	Max distance**	Connection box
1	04	120V	Leading and trailing edge (ELV and TRIAC)	Down to ±15%	6" x 4" x 3" (152 x 102 x 76mm)	30ft (9m)	4444-0700-004-120-LTE <input type="checkbox"/>
2-3	07	120-277V	0-10V	Down to ±10%	6" x 4" x 3" (152 x 102 x 76mm)	30ft (9m)	4444-0700-007-UNV-D10 <input type="checkbox"/>
2-5	12	120V	Leading and trailing edge (ELV and TRIAC)	Down to ±15%	8" x 8" x 4" (203 x 203 x 102mm)	30ft (9m)	4450-0700-012-120-LTE <input type="checkbox"/>
4-8	20	120-277V	Lutron Hi Lume® 0.1% EcoSystem™ (Soft-on, Fade to Black)	Down to ±0.1%	6" x 4" x 3" (152 x 102 x 76mm)	30ft (9m)	4444-0700-020-UNV-D2 <input type="checkbox"/>
8-11	25	120-277V	Lutron Hi Lume® 1% EcoSystem™ (Soft-on, Fade to Black)	Down to ±1%	5" x 4" x 3" (127 x 102 x 76mm)	30ft (9m)	4443-0700-025-UNV-D2 <input type="checkbox"/>
1-12	30	120-277V	0-10V ELDOLED ECOdrive	Down to ±1%	8" x 8" x 4" (203 x 203 x 102mm)	118ft (36m)	4450-0700-030-UNV-ED10 <input type="checkbox"/>
1-12	30	120-277V	Dali ELDOLED ECOdrive	Down to ±1%	8" x 8" x 4" (203 x 203 x 102mm)	118ft (36m)	4450-0700-030-UNV-EDA <input type="checkbox"/>
1-12	30	120-277V	0-10V ELDOLED SOLOdrive	Down to ±0.1%	8" x 8" x 4" (203 x 203 x 102mm)	118ft (36m)	4450-0700-030-UNV-SD10 <input type="checkbox"/>
1-12	30	120-277V	Dali ELDOLED SOLOdrive	Down to ±0.1%	8" x 8" x 4" (203 x 203 x 102mm)	118ft (36m)	4450-0700-030-UNV-SDA <input type="checkbox"/>
8-14	32	120V	Leading and trailing edge (ELV and TRIAC)	Down to ±15%	6" x 4" x 3" (152 x 102 x 76mm)	30ft (9m)	4444-0700-032-120-LTE <input type="checkbox"/>
1-16	38	120-277V	0-10V ELDOLED ECOdrive	Down to ±1%	8" x 8" x 4" (203 x 203 x 102mm)	118ft (36m)	4450-0700-038-UNV-ED10 <input type="checkbox"/>
3-16	38	120-277V	0-10V	Down to ±10%	8" x 8" x 4" (203 x 203 x 102mm)	30ft (9m)	4450-0700-038-UNV-D10 <input type="checkbox"/>
1-44 16 per channel	100	120-277V	0-10V ELDOLED SOLOdrive	Down to ±0.1%	10" x 8" x 4" (254 x 203 x 102mm)	118ft (36m)	4448-0700-100-UNV-SD10 (4 channels)⁽¹⁾ <input type="checkbox"/>

* Wattage requirement for one (1) fixture (remote fixture only).
** Calculated for 16AWG cable. Contact customer service for longer remote distance.

WIRING DIAGRAMS

Multiple luminaires must be connected in series (home run or fixture chain)

⁽¹⁾ Luminaires must be connected on separate channels (1-4). Multiple luminaires can be connected in series on a channel (home run or fixture chain). Do not exceed the wattage and voltage range on each channel.



INSTALLATION

Remodel (RF)

Versatile fixture for new or existing ceiling structure. Suitable for insulated and non-insulated ceiling assemblies, like sheetrock, or paneling. Fixture is ready for remodeling installation.

Ceiling thickness: 1/8" - 1 3/8" (3 - 35mm)



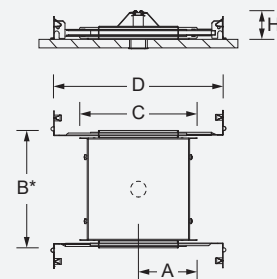
Model	Cut-out dimensions	Clearance (H)
LASER 25	Ø 1" (Ø 25mm)	2 1/2" (64mm)

*Can be installed from below the ceiling.

New construction with plaster frame (NC)

Plaster frame with hanger bars system to be installed during rough-in phase. Suitable for insulated or non-insulated ceiling assemblies, like sheetrock, or paneling. Plaster frame can be shipped separately.

Ceiling thickness: 1/8" - 1 3/8" (3 - 35mm)



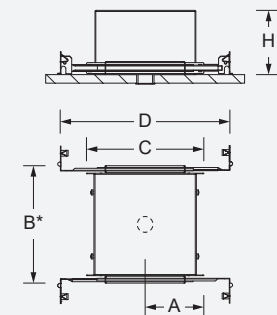
*Provide a minimum of 1/8" (46mm) on each side for the hanger bar fixations

Model	Plaster frame	Cut-out dimensions	Cut-out position (A)	Overall dimensions (BxC)	Hanger bars (D)	Clearance (H)
Laser 25	BN-LAS25RT-NC	Ø 1" (Ø 25mm)	3 1/16" (93mm)	7 3/8" x 7 3/8" (186 x 186mm)	14 1/4" to 26" (362 to 660mm)	2 1/2" (64mm)

New construction with housing suitable for chicago plenum (CP)

Housing with hanger bars system for new construction installations. Suitable for chicago plenum applications. Housing and trim can be shipped separately.

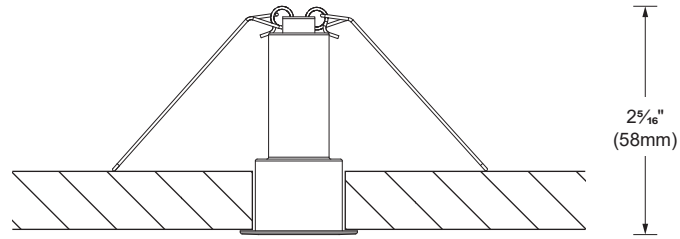
Ceiling thickness: 1/8" - 1 3/8" (3 - 35mm)



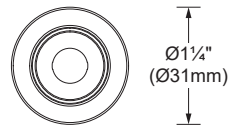
*Provide a minimum of 1/8" (46mm) on each side for the hanger bar fixations

Model	Housing	Cut-out dimensions	Cut-out position (A)	Overall dimensions (BxC)	Hanger bars (D)	Clearance (H)
Laser 25	BI-LAS25RT-CP	Ø 1" (Ø 25mm)	3 1/16" (93mm)	7 3/8" x 7 3/8" (186 x 186mm)	14 1/4" to 26" (362 to 660mm)	4" (102mm)

DIMENSIONS



FRONT VIEW



BOTTOM VIEW

LED COLOR FIDELITY DATA

CRI	CCT	R1	R2	R3	R4	R5	R6	R7	R8	R9	R10	R11	R12	R13	R14	R15	Rf	Rg	Melanopic ratio
80	4000K	81	92	96	79	81	87	85	64	12	79	77	64	84	98	76	84	93	0.710
90	2700K	94	94	91	93	93	92	93	88	70	84	94	82	94	94	92	89	104	0.460
	3000K	97	96	93	94	96	94	95	92	82	89	94	86	97	95	96	91	104	0.538
	3500K	99	99	98	98	98	97	97	96	93	99	99	83	99	98	98	93	99	0.670
	4000K	93	94	93	94	92	91	97	91	74	85	93	72	93	96	92	92	99	0.740

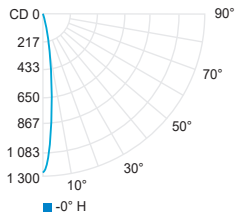
PHOTOMETRIC DATA



CCT (K)	CRI	LOAD (W)	OPTIC	LUMENS (lm)	EFFICACY (lm / W)	MAX CANDELA (cd)	MODELS
3000K	90	2W	Spot 14°	115	57	1 264	ILAS25RTXX-930-SP
			Medium 24°	121	60	648	ILAS25RTXX-930-MD

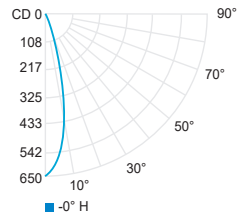
Use multiplier table for other CCT and CRI output data. Efficacy based on IESNA LM-79 test reports. Visit iguzzini.com/us for complete photometric data.

Spot 14° (3000K, 90CRI)



Center beam fc	Beam width ft
2ft	0.5
4ft	1.0
6ft	1.4
8ft	1.9
10ft	2.4
12ft	2.9

Medium 24° (3000K, 90CRI)



Center beam fc	Beam width ft
2ft	0.9
4ft	1.7
6ft	2.6
8ft	3.4
10ft	4.3
12ft	5.1

CCT options	2700K	3000K	3500K	4000K	4000K
CRI options	90CRI	90CRI	90CRI	80CRI	90CRI
Multiplier	0.95	1	1.05	1.31	1.21